



Jukka Lähesmaa

Senior Adviser

Permanent Secretary's Cabinet



Possibilities of utilizing social and health data

- **Common direction**
 - Health Sector Growth Strategy
- **Unique national social and health data sources**
- **Secondary use of data legislation**
 - one stop shop for the data
- **Highest-class knowhow, research and education – Centres of excellence**
- **Building it together**
 - Acting and growing ecosystem



HEALTH SECTOR GROWTH STRATEGY - Direction for developing the ecosystem

Finland to be

- The source and user of versatile and high quality scientific research, inventions and innovations.
- A preferred global partner in public-private collaboration in research and innovation.
- A dynamic operating environment for new companies.
- A reliable partner for the international growth of companies.
- An attractive target country for health sector investment.
- A model country of sustainable personalized healthcare.

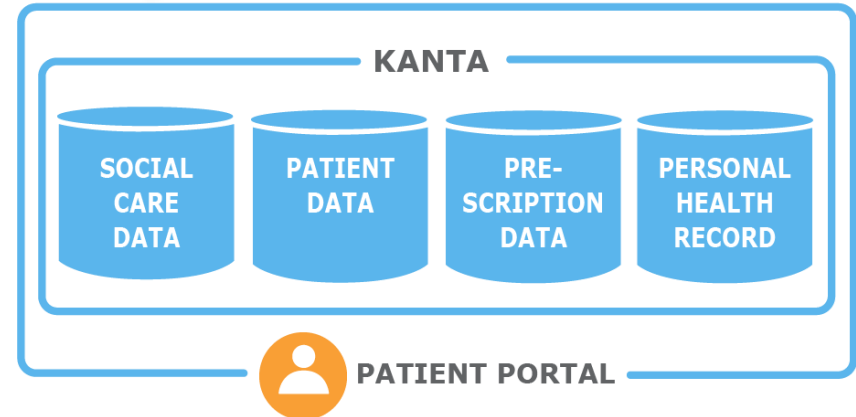




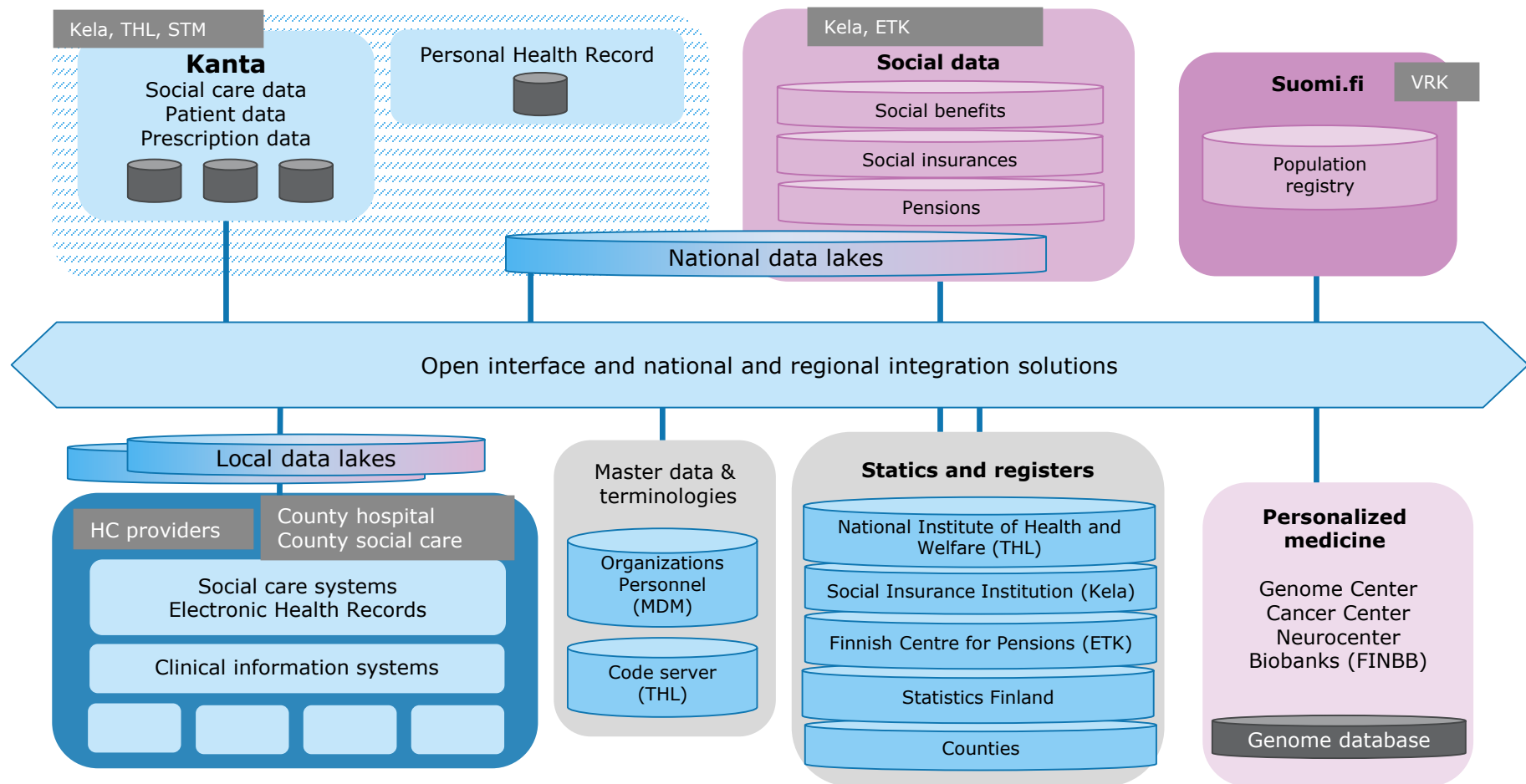
SUSTAINABLE BACKBONES - UNIQUE NATIONAL KANTA SERVICES

- Patient, social care and prescription data gathered in a national databank.
- Healthcare professionals can access the needed data nationwide, store patient records and make prescriptions.
- Citizens can browse own medical records and prescriptions and order repeat prescriptions in the online service.

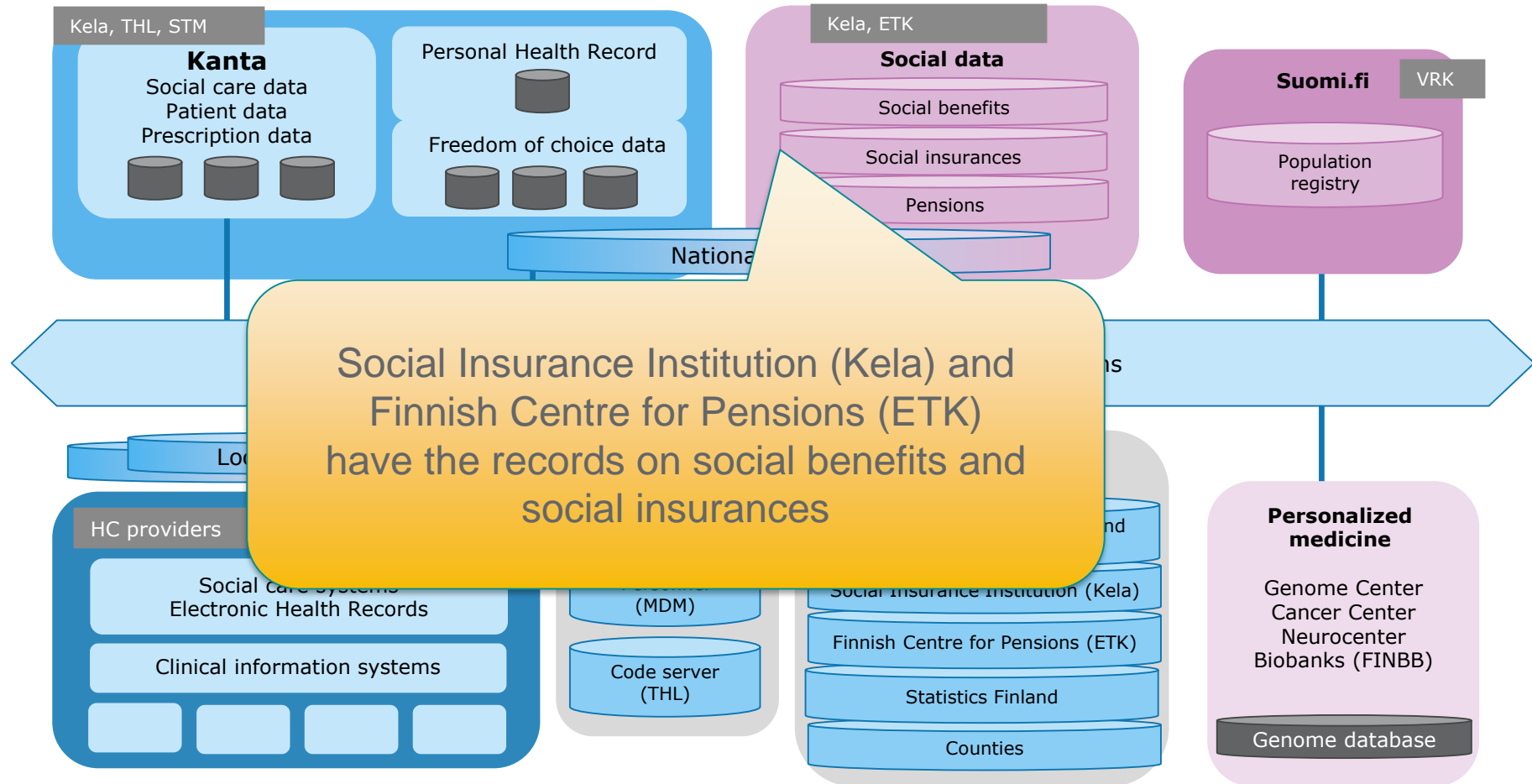
KANTA is an entity of digital services, which brings benefits for citizens, pharmacies and the social welfare and healthcare sector



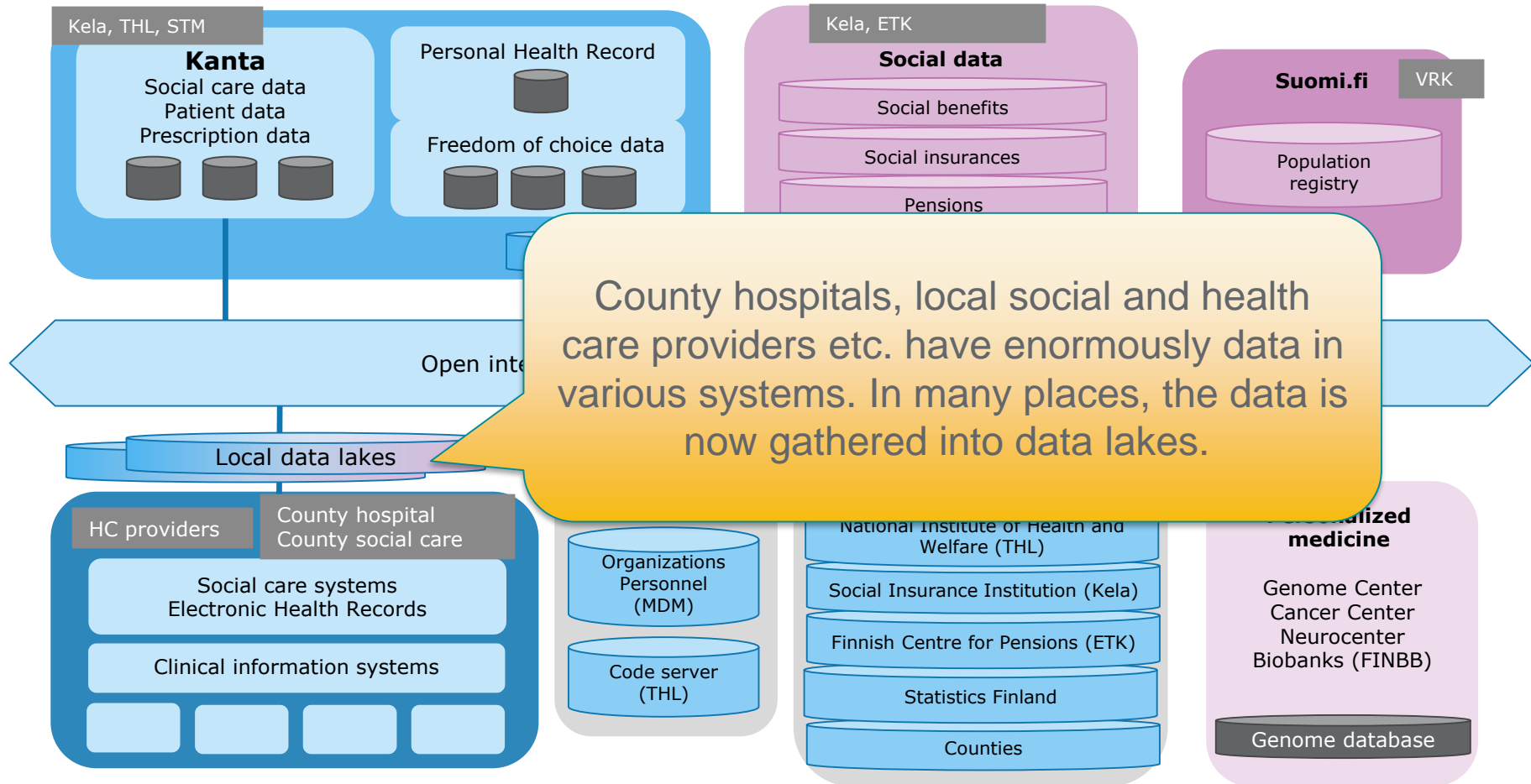
EXAMPLES OF DATABANKS – IN ADDITION TO KANTA THERE IS A LOT MORE



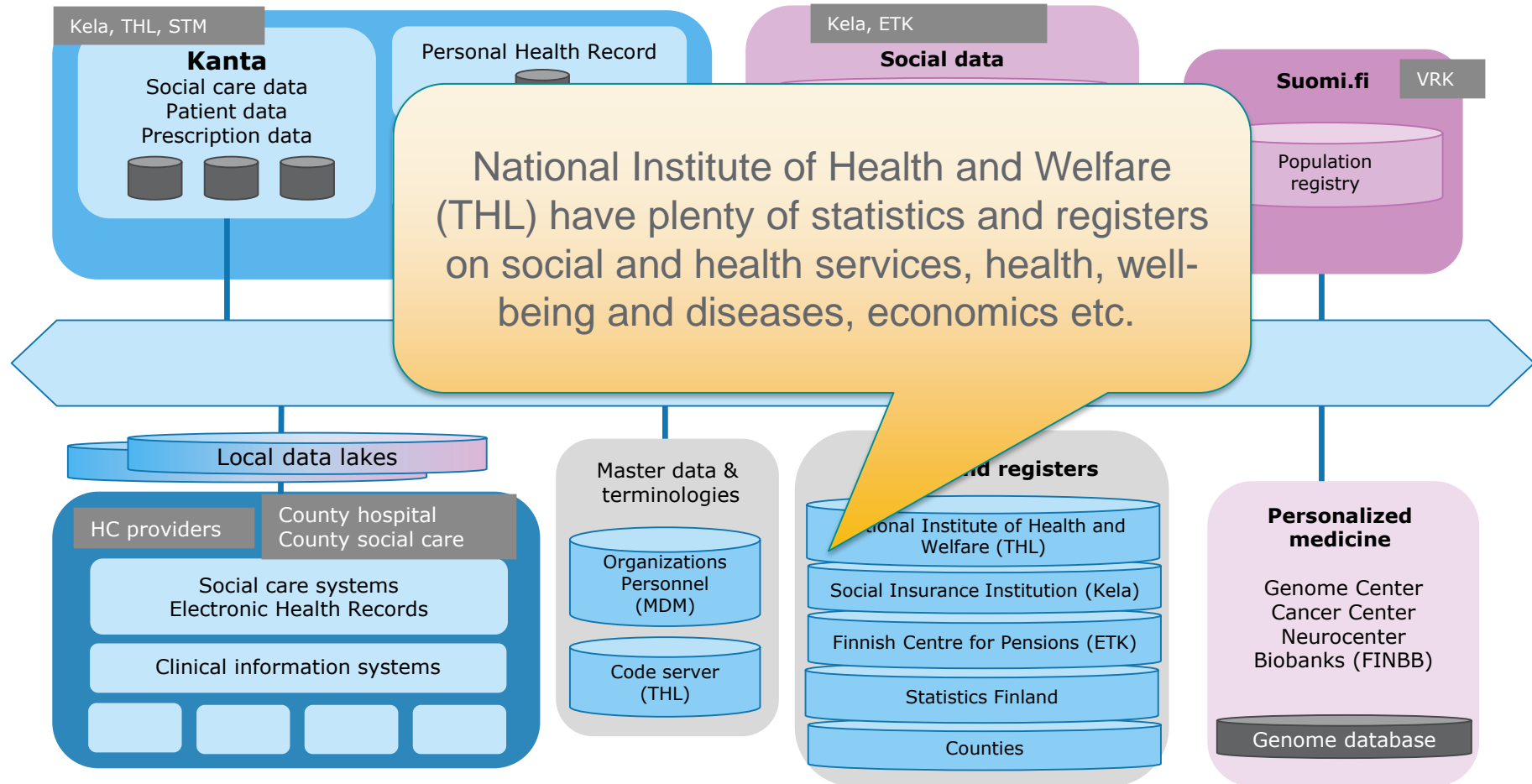
EXAMPLES OF DATABANKS – IN ADDITION TO KANTA THERE IS A LOT MORE



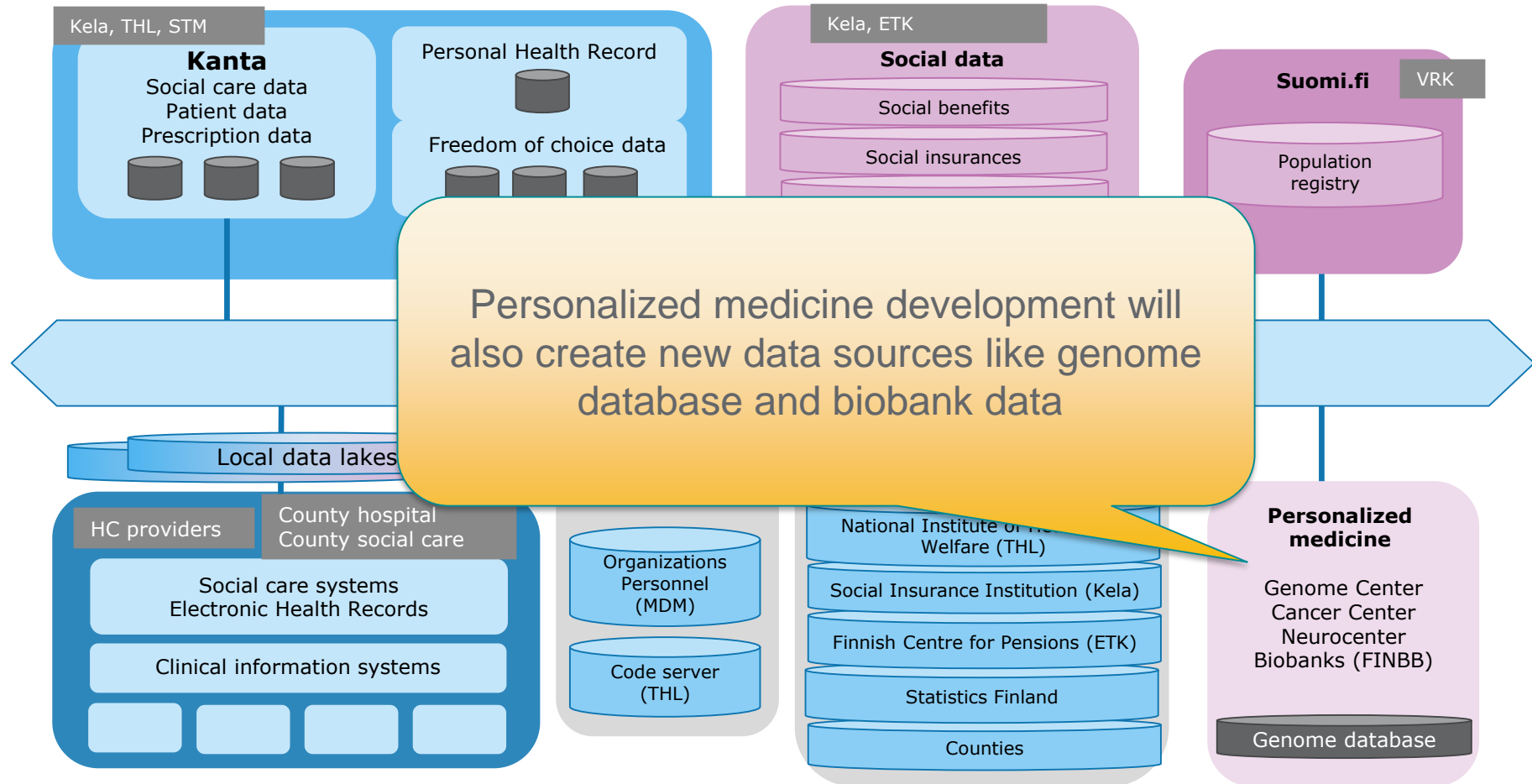
EXAMPLES OF DATABANKS – IN ADDITION TO KANTA THERE IS A LOT MORE



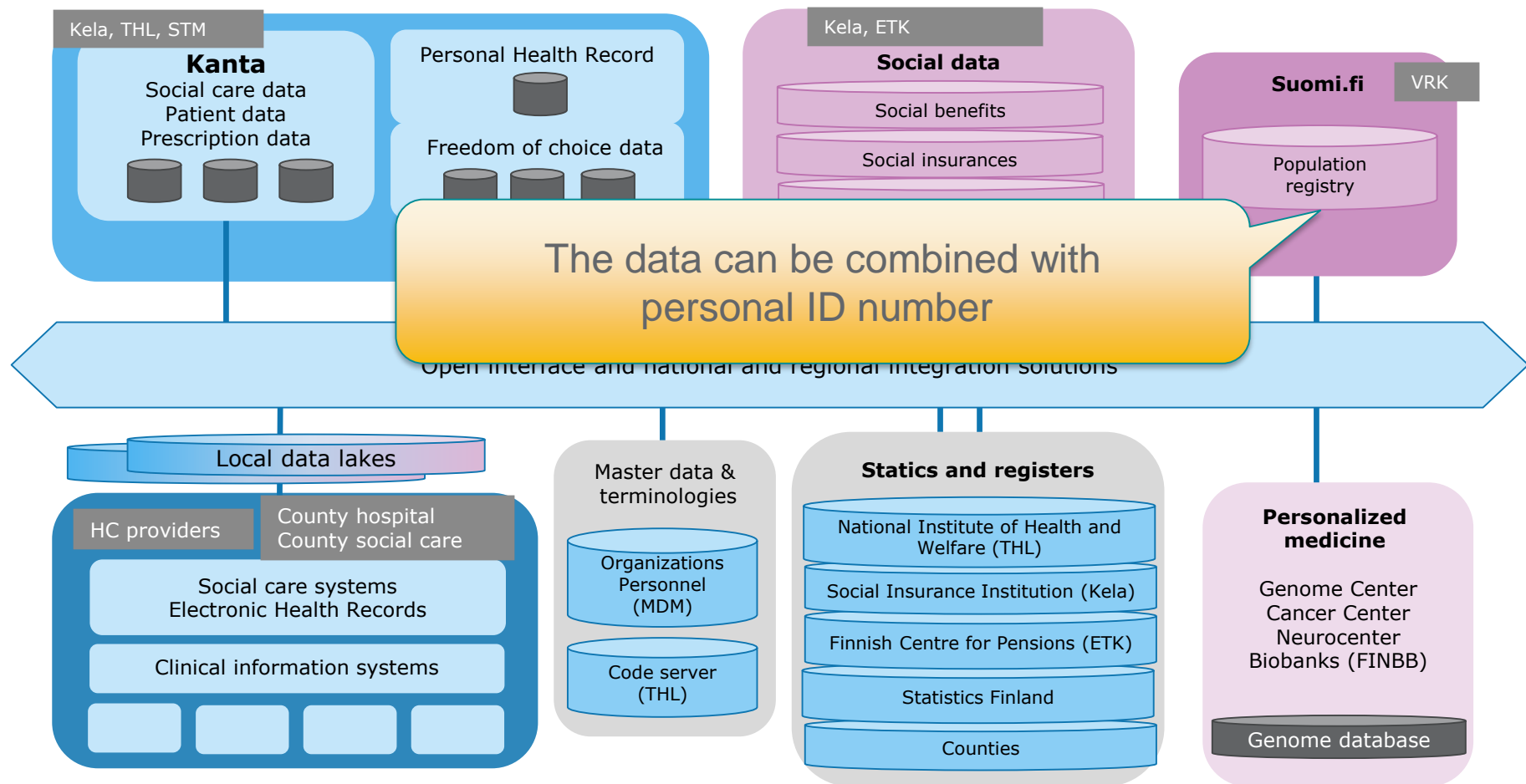
EXAMPLES OF DATABANKS – IN ADDITION TO KANTA THERE IS A LOT MORE



EXAMPLES OF DATABANKS – IN ADDITION TO KANTA THERE IS A LOT MORE



EXAMPLES OF DATABANKS – IN ADDITION TO KANTA THERE IS A LOT MORE





SECONDARY USE OF DATA LEGISLATION

Act on **Secondary Use of Health and Social Data**

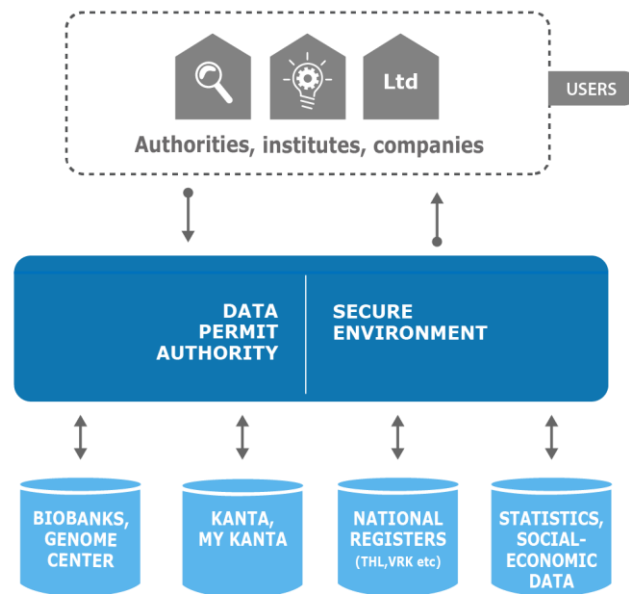
- To ensure authorities, institutes and companies access to the health and social data in Finland.
- To provide efficient and secure procedures to utilize the data in research, development and innovation activities, education and knowledge management duties.

Act is effective since May 2019

SINGLE POINT OF CONTACT

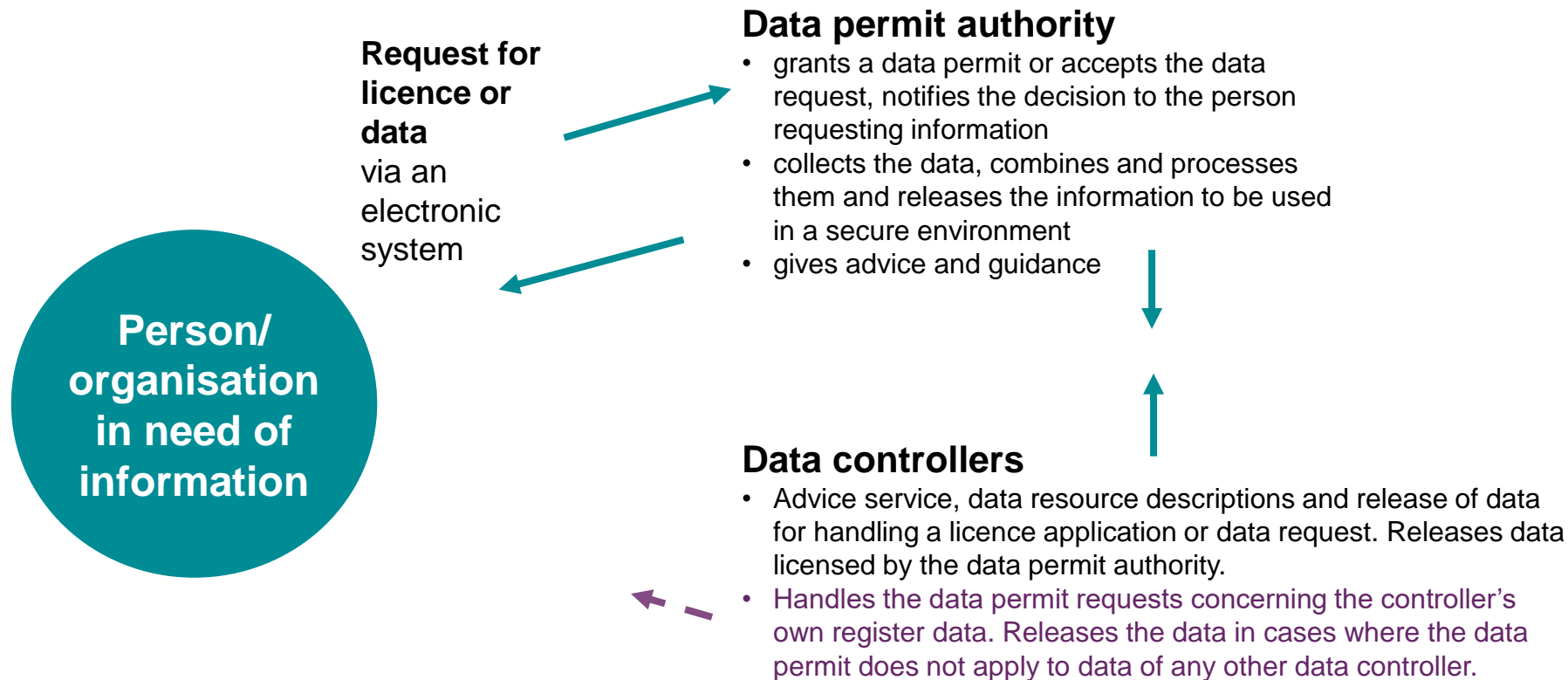
STEP BY STEP 2018

data permit authority and service operator will be established





HOW TO PROCEED TO GET DATA PERMITS AND MATERIAL?



Faster and improved access to data



Before

Permits separately
from each data owner



A long process



From 2020

Centralised access to
permits and data sets

Prefixed periods for
granting permits and
access to data

ALSO

- Helpdesk for data users
- Data owners will provide advice on data use



CENTERS OF EXCELLENCE

- Highest-class knowhow, research and education

Finnish government is investing over 30 million euros for personalized medicine research, innovation, education and data management centers of excellence.

Establishing

- National Cancer Center FICAN
- Genome Center
- Pharmaceutical Development Center
- Neurocenter
- Enhancing the joint activities of the biobanks





BUILDING IT TOGETHER

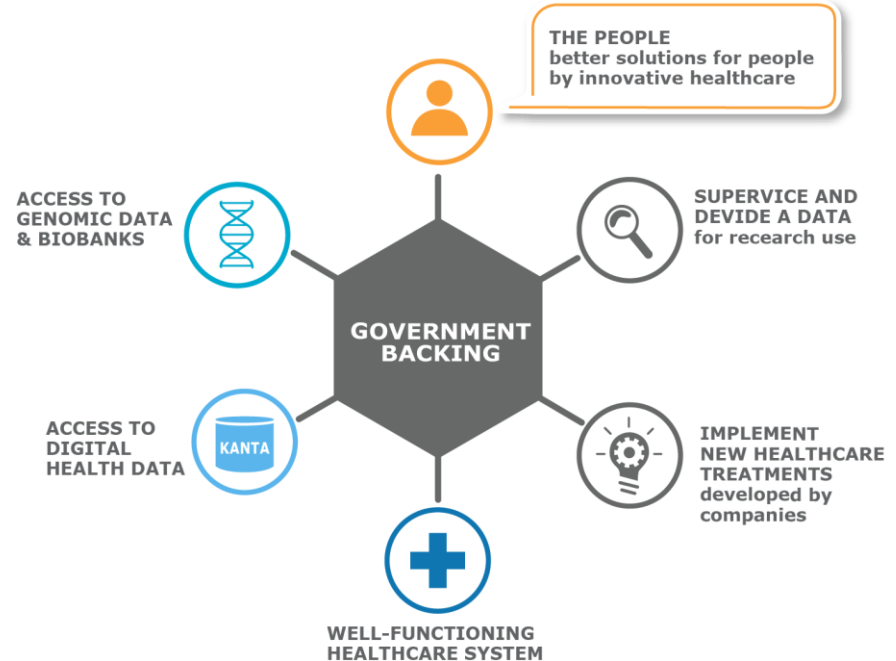
- Acting and growing ecosystem

Building the health ecosystem is a joint venture of citizens, companies, authorities and others.

Highlights of the Finnish ecosystem

- Well educated citizens eager to test innovations and participate research.
- Global dynamic network of competent enterprises. Especially active start-up community.
- Major authorities, public and private health and social service providers working together.
- Established procedures and open, innovative environment for public-private cooperation.

GOVERNMENT ROLE ON ECOSYSTEM





Possibilities of utilizing social and health data

Senior Adviser Jukka Lähesmaa

Email: jukka.lahesmaa@stm.fi

Tel +358 2951 163139

Twitter: @JukkaLahesmaa

Ministry of Social Affairs and Health

Internet: stm.fi

Twitter: @MSAH_News

