



JYVÄSKYLÄN YLIOPISTO
UNIVERSITY OF JYVÄSKYLÄ

Opportunities of AI in the Finnish health care system

Prof. Pekka Neittaanmäki
3.12.2019 / Health Tuesday



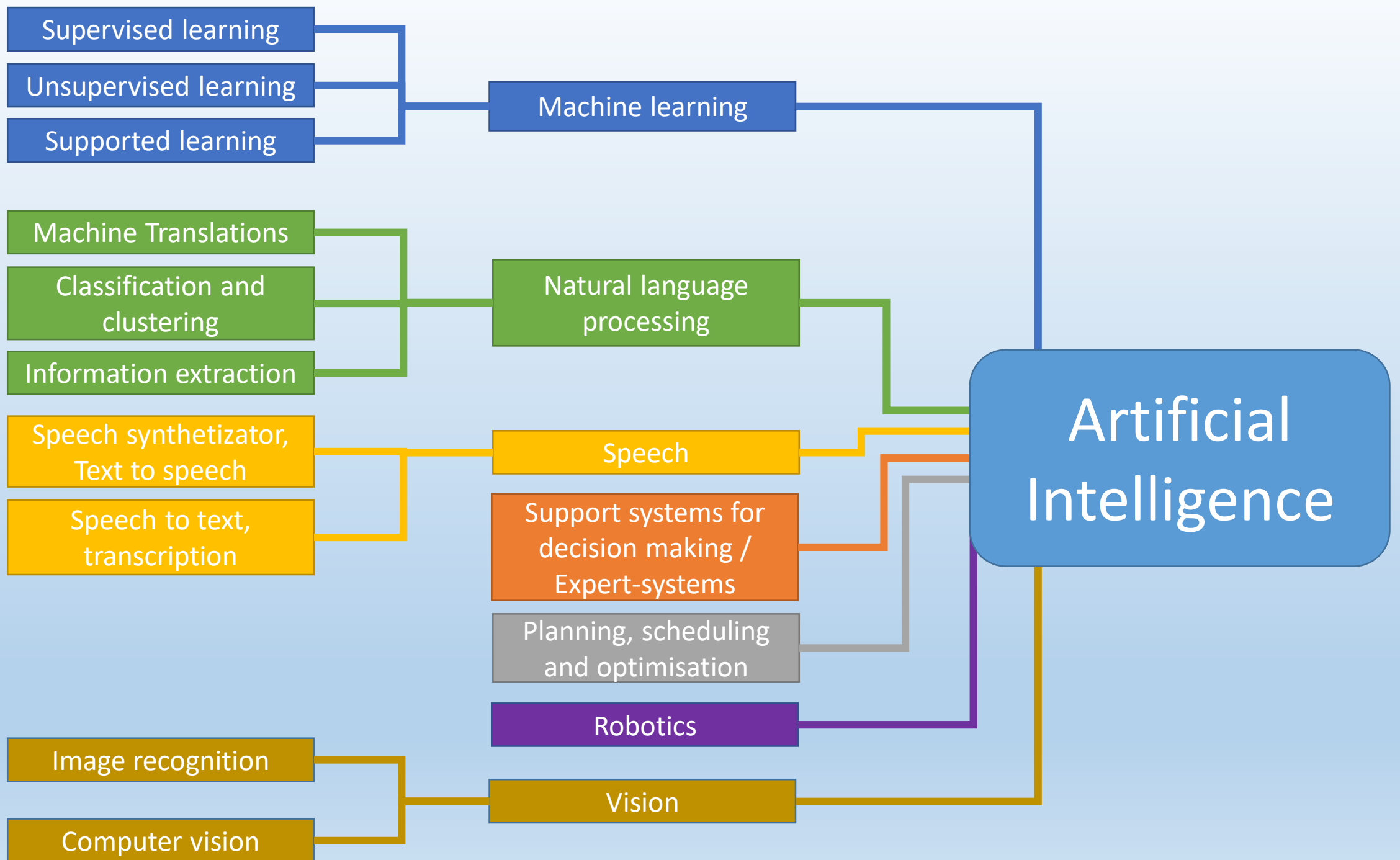
Strengths of humans and artificial intelligence

Humans are naturally good at:

- Common sense
- Rationalization
- Imagination and innovation
- Moral decisions
- Abstraction
- Compassion
- Generalization
- Causality

Artificial intelligence can augment human abilities at:

- Pattern recognition
- Dealing with massive data
- Repetitive tasks
- Fast objective decisions
- Finding hidden properties in massive data
- Works tirelessly 24/7, fast response time
- Can be scaled up to a global scale
- Correlation



AI in health care, from technology to applications and future advancements

Currently in production and use

AI algorithms

- Neural networks

Computer vision and text analytics

Pattern recognition and natural language understanding

- Computer translations
- AI supported imaging and diagnostics

Service robots, chatbots

- Improved user interfaces, control and reporting using natural language

In development and testing

AI supported Radiology, Neurology, Dermatology, Cardiology, Orthopedics, Ophthalmology ...

AI supported pharmacology, analytics, personalized health care and wellbeing. Personal AI assistant

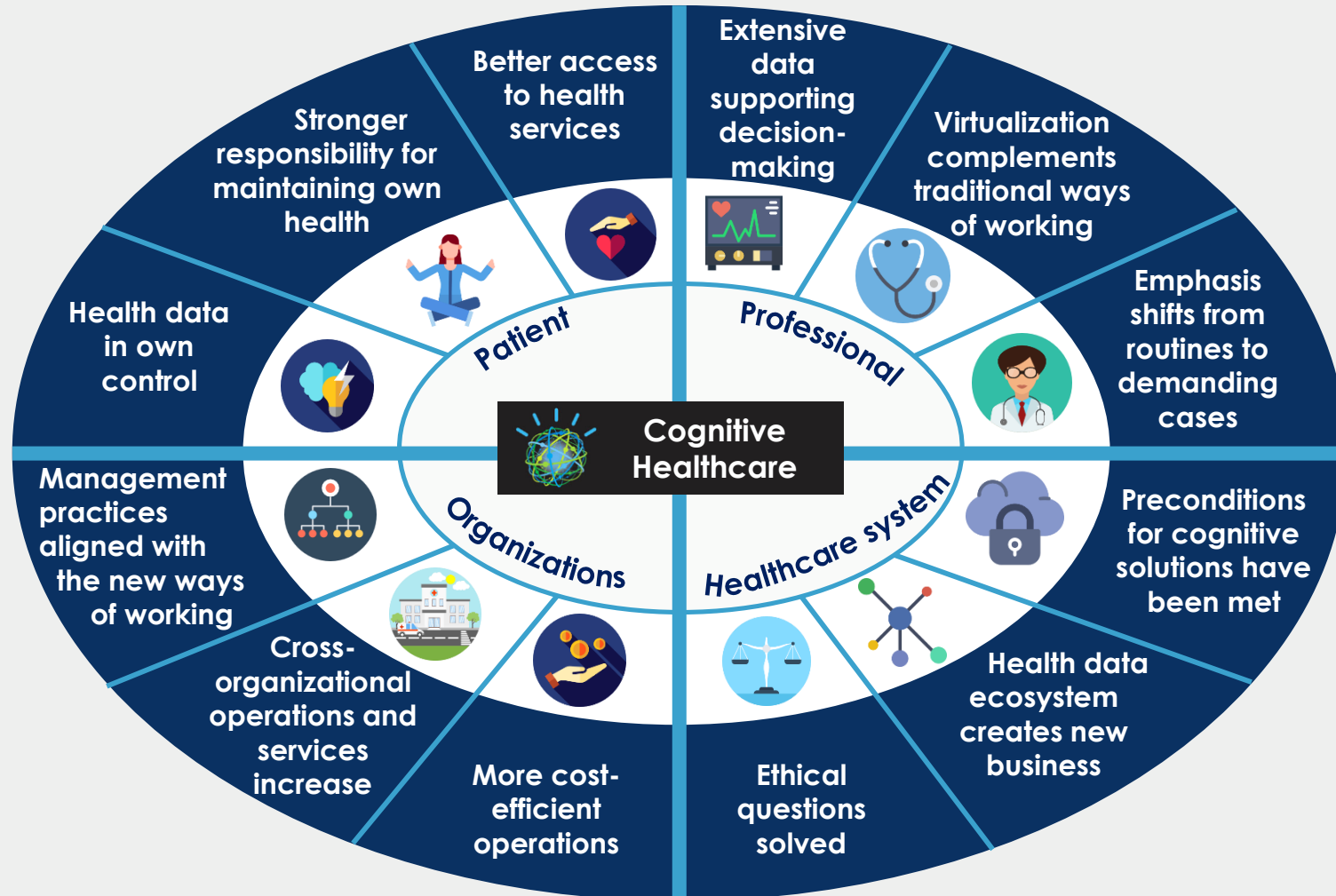
The future

Innovation, new technologies and augmented abilities



Cognitive Healthcare Vision

What Does Cognitive Healthcare Look Like in Finland in Five Years?





Latest research

- [Tekoäly ja terveydenhuolto Suomessa](#) "AI and health care in Finland"
- [Kyberturvallisuus sosiaali- ja terveydenhuollossa](#) "Cyber security in social- and health care"
- [Interventiot ja tekoäly terveydenhuollossa](#) "Interventions and AI in health care"
- [Suomen terveystiedot ja sen hyödyntäminen](#) "Finnish health data and its utilization"
- Available for free online at jyx.jyu.fi





Thank you!

