

ICEYE

The background of the slide features a composite image of Earth from space, showing the blue horizon and the sun's bright glow on the right. Overlaid on this are several white orbital arcs and five circular icons representing satellites in orbit.

SAR SATELLITE CONSTELLATION FOR
FREQUENT AND RELIABLE COVERAGE

The background of the image is a grayscale photograph of a cleanroom environment. Three individuals wearing white protective suits and hairnets are working on a large, rectangular electronic assembly, likely a satellite component, which is mounted on a metal frame. The scene is dimly lit, with light coming from the left, creating a professional and technical atmosphere. The ICEYE logo is overlaid on the left side of the image in a large, white, sans-serif font.

ICEYE

WWW.ICEYE.COM

Creating World Leading
SAR Satellite Technology.
Providing an Easy Entry to Space.

ICEYE'S MISSION
**ENABLE BETTER
DECISION MAKING**

ICEYE PROVIDES
**TIMELY AND RELIABLE
EARTH OBSERVATION DATA.**

20 z 30 z



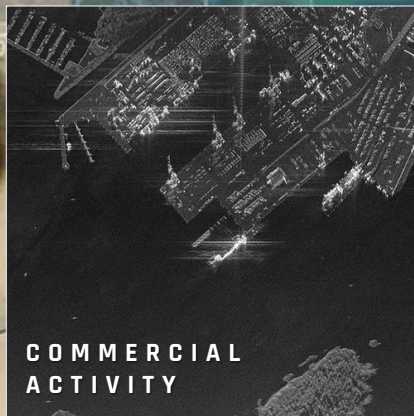
AGRICULTURE



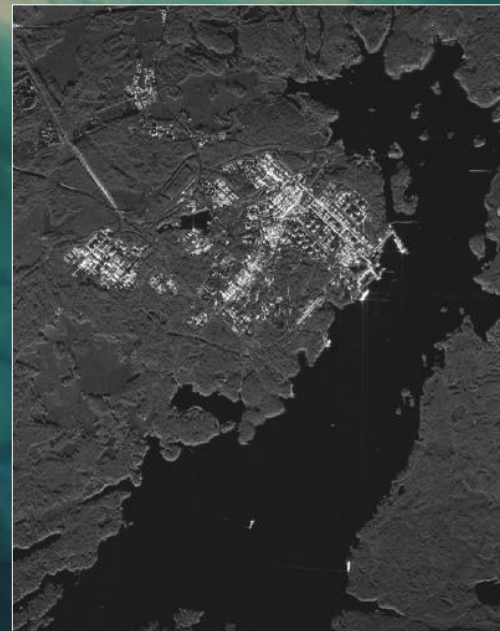
SITE SECURITY



CRITICAL
INFRASTRUCTURE



COMMERCIAL
ACTIVITY



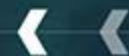
AREA SURVEILLANCE

- Inbound And Outbound Traffic
- Monitoring Site Activity
- Site Security
- Regulation Enforcement



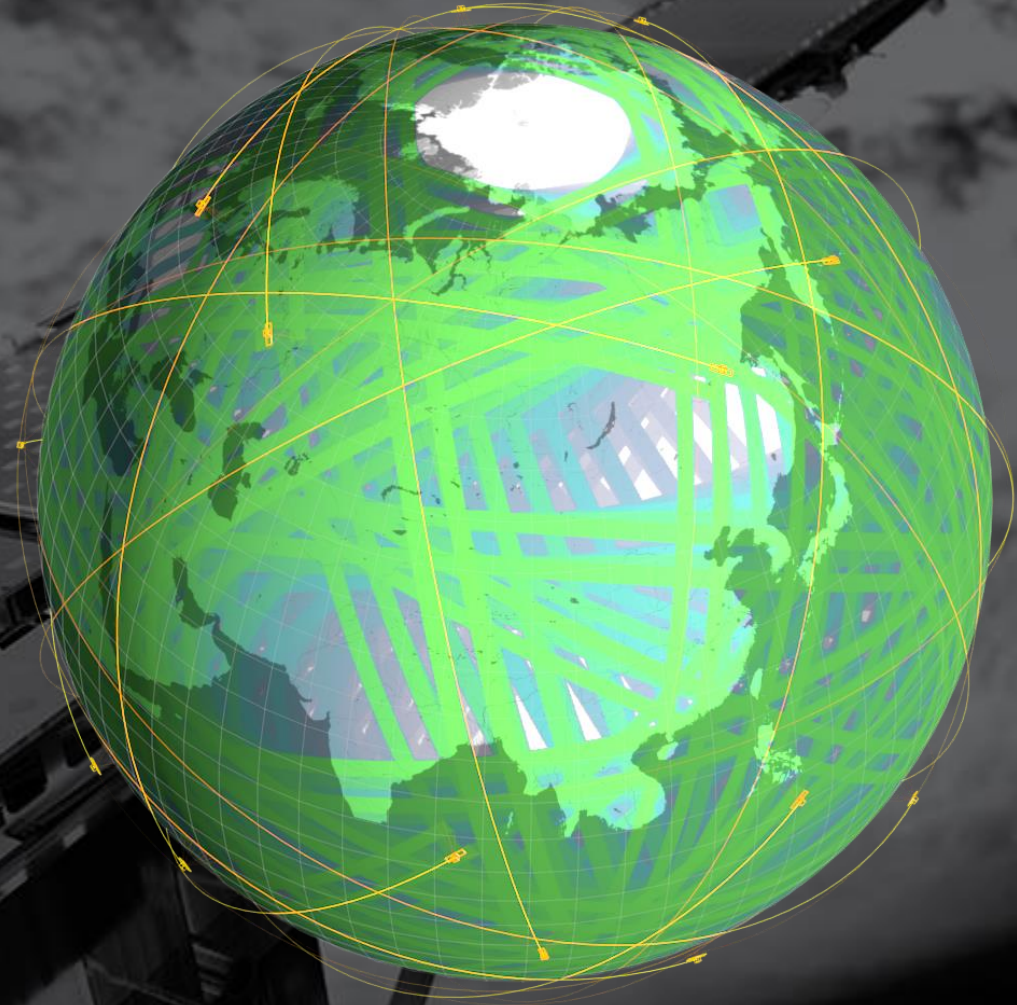
845834698460

84583



WORLD'S LARGEST SAR SATELLITE CONSTELLATION

- **3h Response Time** Around the Globe
- **Radar Instrument:**
Reliable Imaging Through Clouds,
Day and Night time
- **Imaging Throughout the Day,**
Up to 12 Images A Day of Your AOI
- **Direct and Fast Access to Tasking**



ULTIMATE RELIABILITY **SEE IN THE DARK**

ICEYE's Microsatellites Capture Data With ICEYE's Proprietary Miniature Synthetic Aperture Radar Instrument (SAR).

Unlike Optical Cameras, SAR Images With Radar Pulses, Making It Independent Of Daylight Conditions, Allowing High-quality Imagery Also During Night-time.



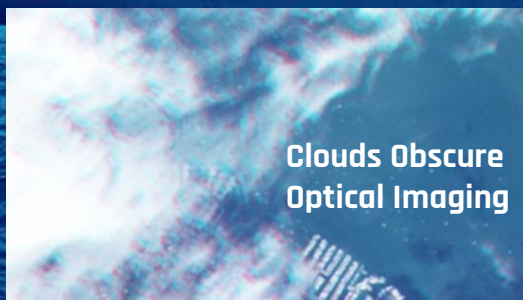
**City During
Night Time**

ICEYE Sensor Data



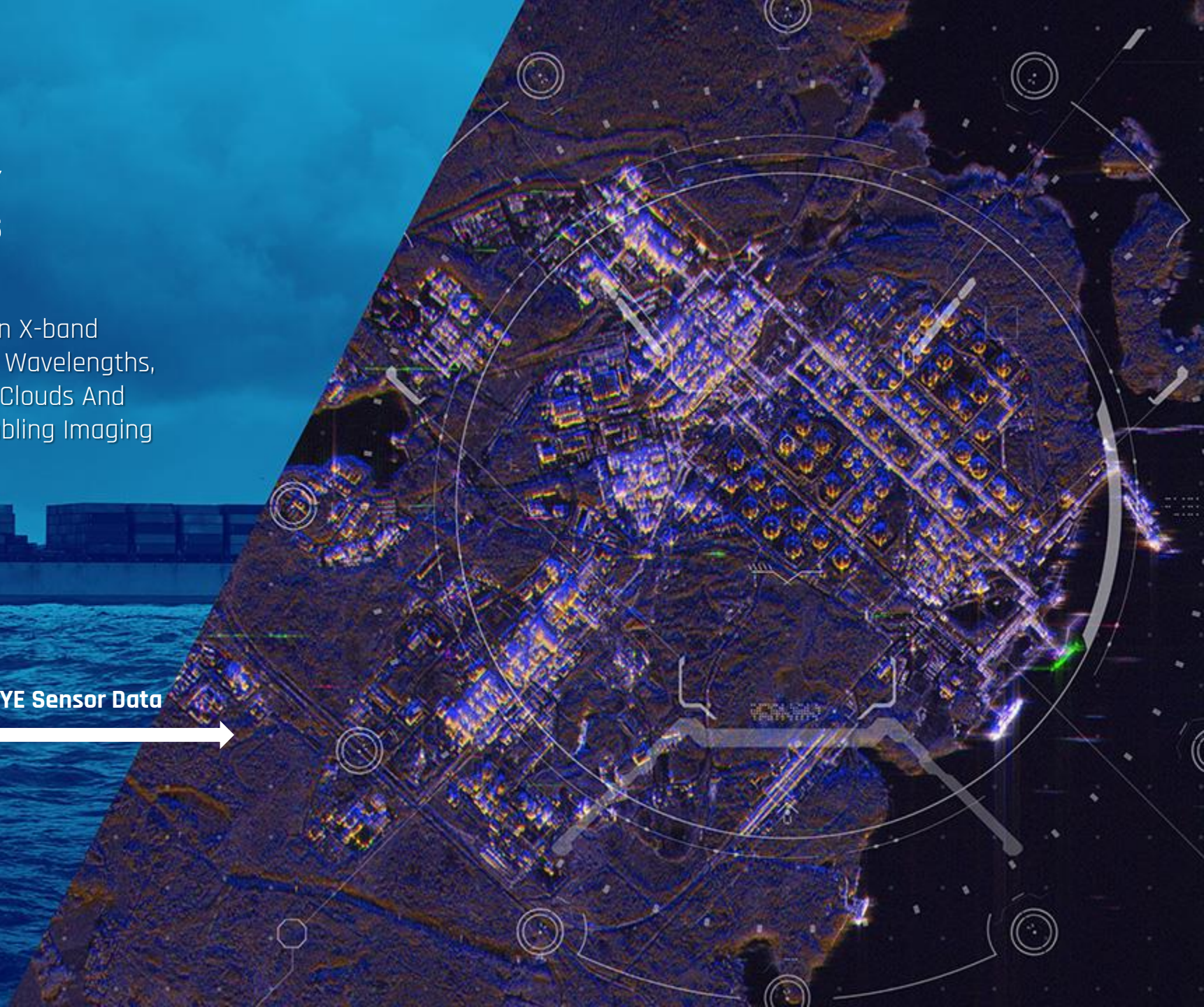
ULTIMATE RELIABILITY **SEE THROUGH CLOUDS**

ICEYE's Imaging Radar (SAR) Images In X-band Microwave Frequencies. Unlike Optical Wavelengths, These Frequencies Can Pass Through Clouds And Rain With Very Little Attenuation, Enabling Imaging In Virtually Any Weather Conditions.



Clouds Obscure
Optical Imaging

ICEYE Sensor Data



LARGE AREAS & HIGH SPEED NO COMPROMISES

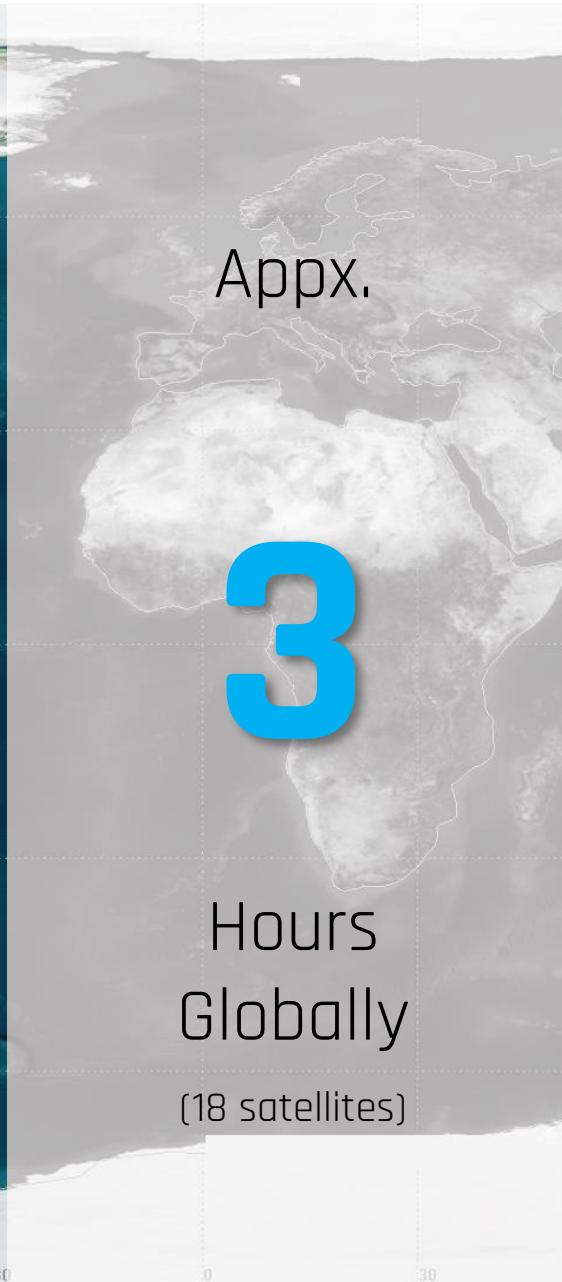
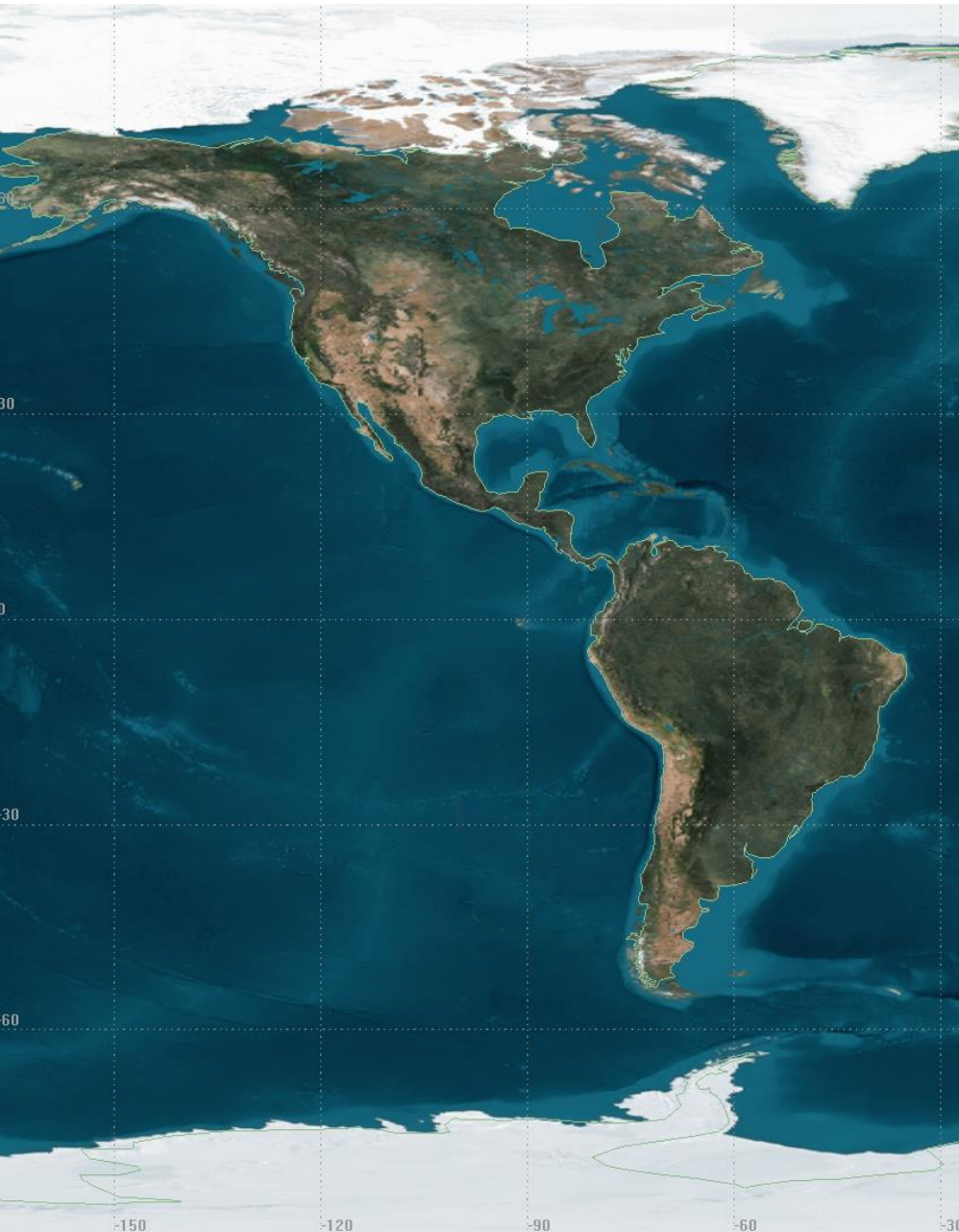
- **Cover Large Areas At 3 meter resolution**
- **Never-before-seen Capabilities In Enabling Change Detection At High Temporal Resolution**
- **Order And Delivery At Unmatched Speeds**



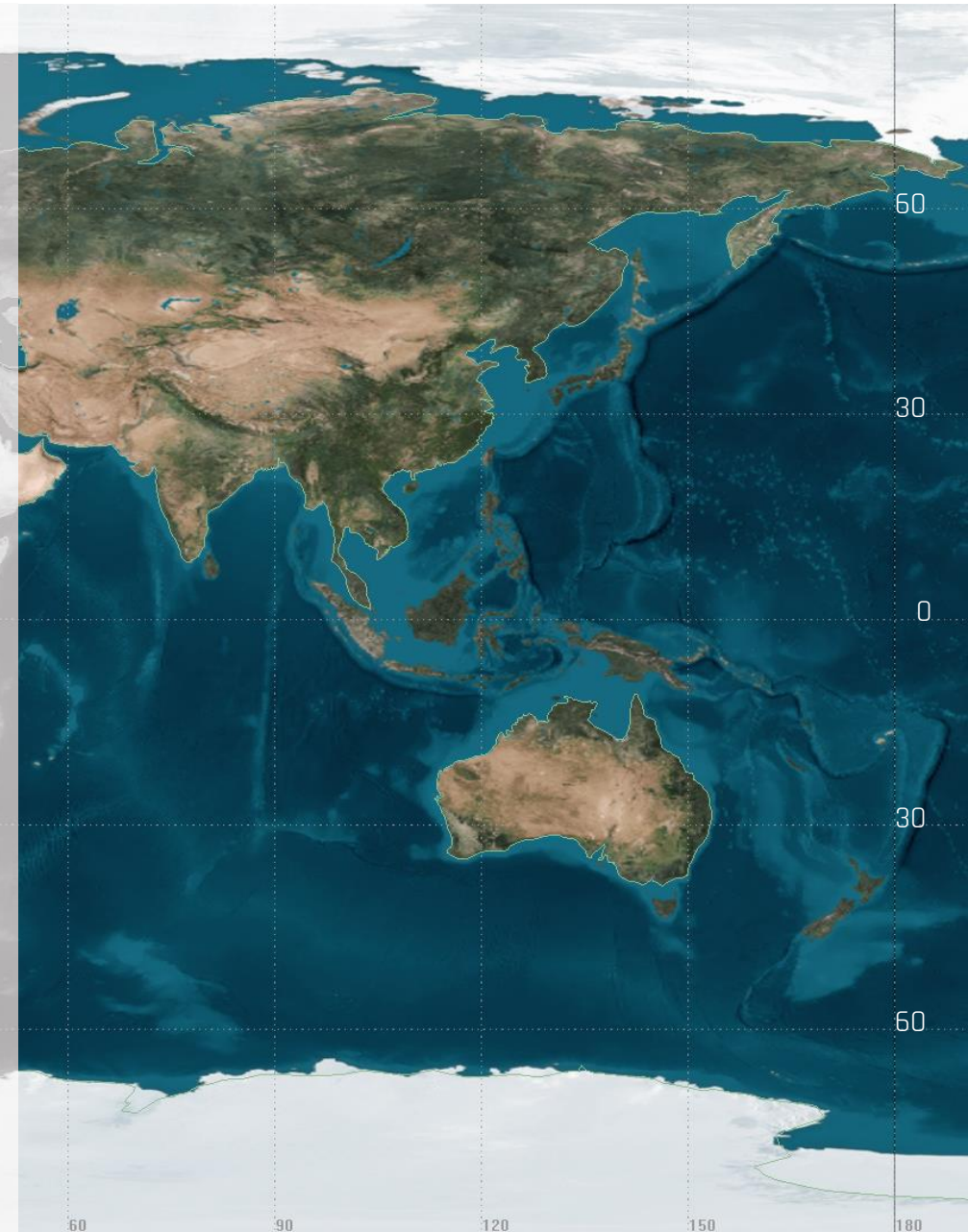
24h ICEYE
Constellation



AVERAGE REVISIT



ICEYE SAR Satellite Constellation



SAR SATELLITE CAPABILITIES ICEYE CONSTELLATION

By Adopting Cutting-edge Technologies And The New Space Design Philosophy ICEYE Has Built The World's Smallest SAR Spacecrafts Below 100kg Mass.

FEATURES:

- **Microsatellite** Class Spacraft
- Imaging Resolutions **20x20 / 3x3 / 1.5x1.5 / 1x1 Meters**
- **Proprietary SAR Instrument**
- **100-fold Cost-efficiency** Compared To Traditional SAR Satellites



INDUSTRY DATA APPLICATIONS

MARITIME
SURVEILLANCE

ICE MONITORING

OIL SPILL
DETECTION

INFRASTRUCTURE
MONITORING

ECONOMIC
ACTIVITY
MONITORING

INSURANCE AND
REINSURANCE

DISASTER & RESCUE
MANAGEMENT

AGRICULTURE

PREVENTION &
MONITORING OF
ILLEGAL FISHING

ICEYE

ICEYE: European New Space Leader

- First ever small SAR Satellite launched **In 2018**
- Over **100 People** with 25 different nationalities
- Total of **\$65M** of secured financing
- **World Leader In SAR** Miniaturization Technology
- Existing portfolio of international customers



ICEYE

REPUTATION OF DELIVERING RESULTS
CUSTOMERS INCLUDE:



ICEYE