

R

Global reach. Nordic touch. Boutique approach.

Strategy, design, creative, high-performance engineering.

Juha-Matti Liukkonen

juha-matti.liukkonen@reaktor.com

Helsinki

Yliopistonkatu 4
00100 Helsinki
Finland

Dubai

Dubai Internet City,
Building 1, Office
#104
United Arab
Emirates

New York

30 W 21st Street
New York
NY 10010

Amsterdam

Weteringschans 165
1017 XD Amsterdam
Netherlands

Tokyo

6823 Building, 701
Roppongi 6-8-23
Minato-ku
Tokyo 106-0032
Japan

We are digital business enablers

Reaktor is a design and development hybrid partner for forward-thinking companies and organisations.

We reimagine businesses, and design and build tomorrow's digital products.

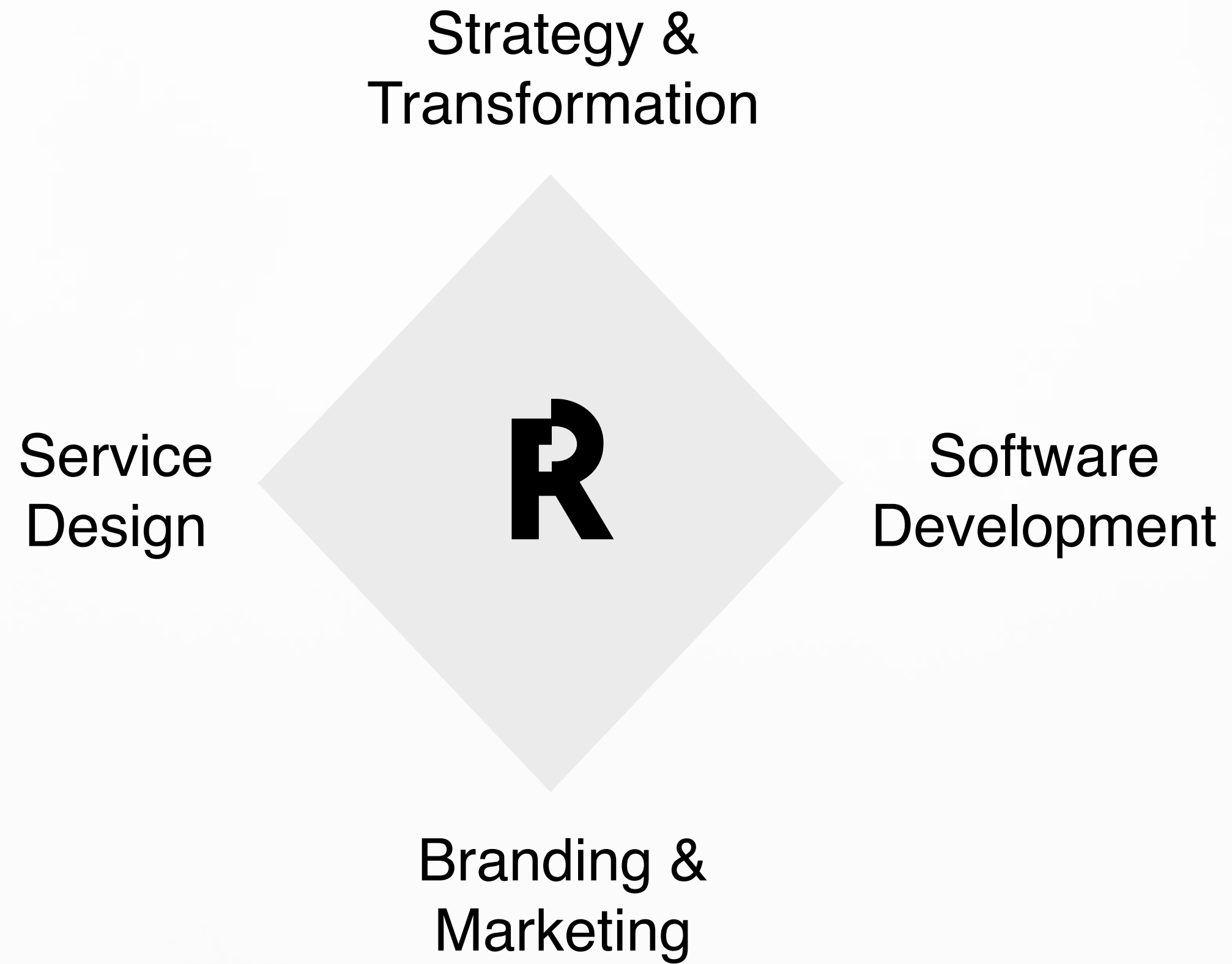
Our full range of consultancy and agency services include expertise from high level business consultancy to hands-on service and product design and development, to branding and marketing.

We help you to

- Design and validate new business ideas
- Design and build your products and services
- Create a business driven technology strategy
- Transform your organisation for high performance

Reaktor competences

- Strategic vision & concepts
- Concept design
- UI & UX design
- Digital business insight
- Software development & architecture
- Cloud computing & DevOps
- Analytics & AI



Finland - the Netherlands - USA - Japan - UAE

Primary customer segments

Digitalization	AI	Aviation
		Marine
		Telco
		Retail
		Finance
		Healthcare
		Media

Reaktor

100%

Employee ownership

2000

Year founded

5

Offices across 3 continents

500+

Team members

Reaktor ecosystem

Reaktor Ventures & Partners

12

Design & software companies (AR/VR, A.I.)

24

High performing startups

15+

Operational countries

1200+

Highly talented people



The Reaktor team, in numbers

25

BUSINESS
DESIGN

75

UX AND
UI DESIGN

30

DATA SCIENCE
& AI

10

MANAGEMENT
CONSULTANCY

20

MARKETING AND
BRANDING

15

AGILE
COACHING

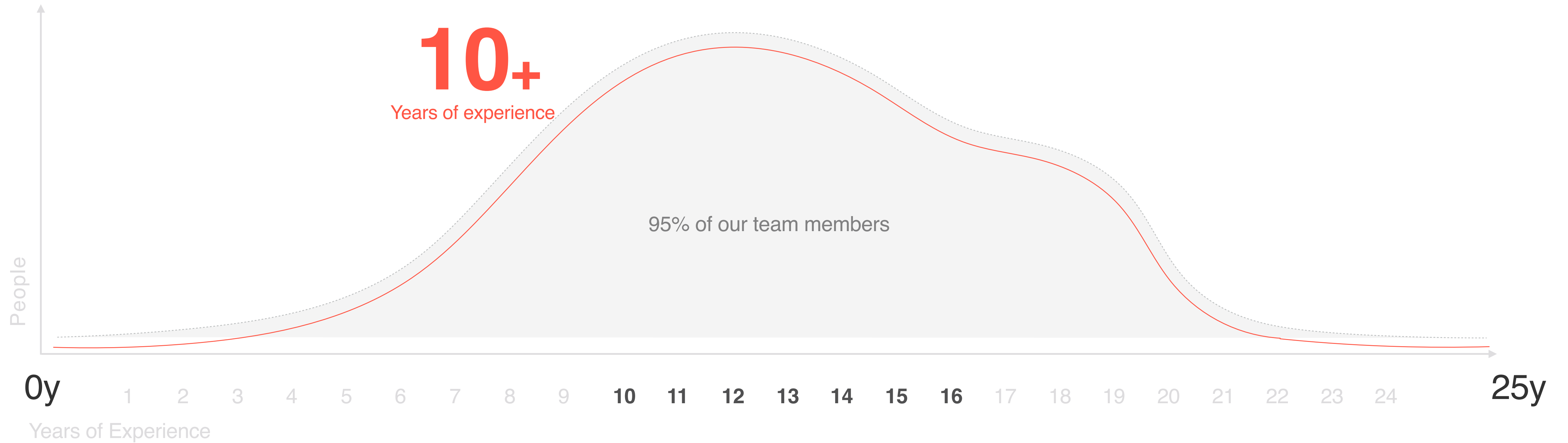
330

SOFTWARE
ENGINEERING

5

NEW
VENTURES

Highly experienced



R

Finnair

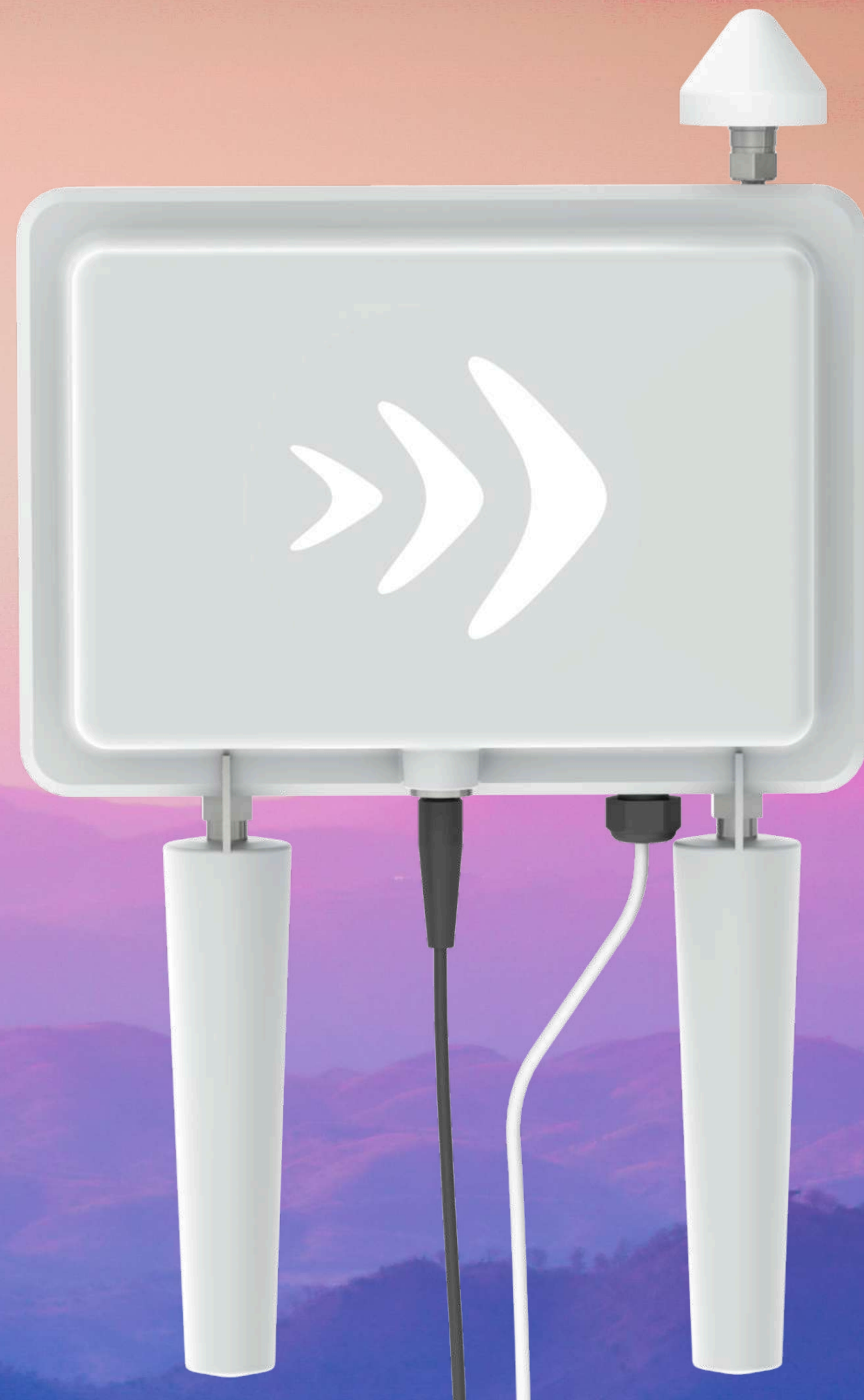
Redefining passenger journeys in the digital age to deliver world class customer satisfaction.

“Having the design and development in one agile team has made the development efficient and has produced superb results.”

Jouni Oksanen,
Vice President of eCommerce, Finnair

Connecting the next billion

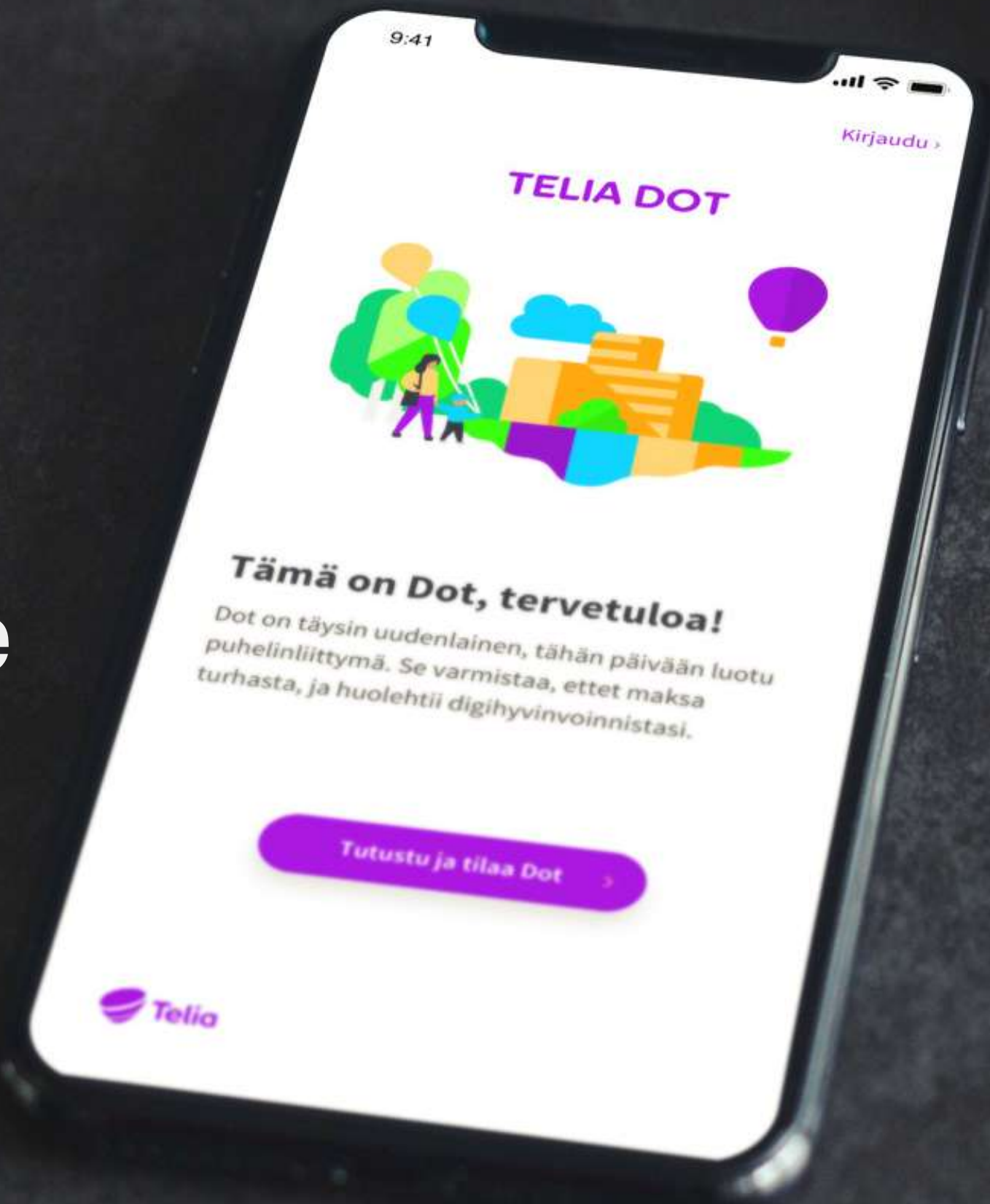
NOKIA × Reaktor



R

Telia

A joint, multi-talented execution team was supported by Reaktor's expert coaches to create a model for building substantial new digital business.



“Developing new business model and digital service in extremely short timeline was only possible with Reaktor”

Jan Brandberg,
Head of Dot, Telia

R

Adidas

Partnership to
build next
generation digital
services.



R

HBO

Since 2014 Reaktor has worked with HBO to renew and develop their digital services.



R

Reaktor Space

Scaling your business to serve global audiences.



Business design with space

Using less fuel when flying is both good business and reduces climate stress. Having advance warning of weather patterns and anomalies at airports makes for a smoother and more efficient travel experience. And space weather has an impact on high altitude travel as well.

Identifying the value chains, designing a solution architecture and validating the user workflow integrations in this case involved also space elements.

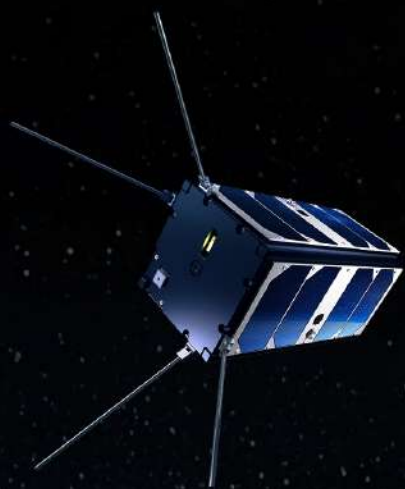




Space is a tool to scale

Global coverage and service delivery to remote locations enable new, global business for aviation, marine, logistics, insurance, agriculture and many other industries.





Reaktor Space Lab

Reaktor Space Lab



ESTABLISHED
2016



PERSONNEL
8

[FIELDS OF OPERATION]



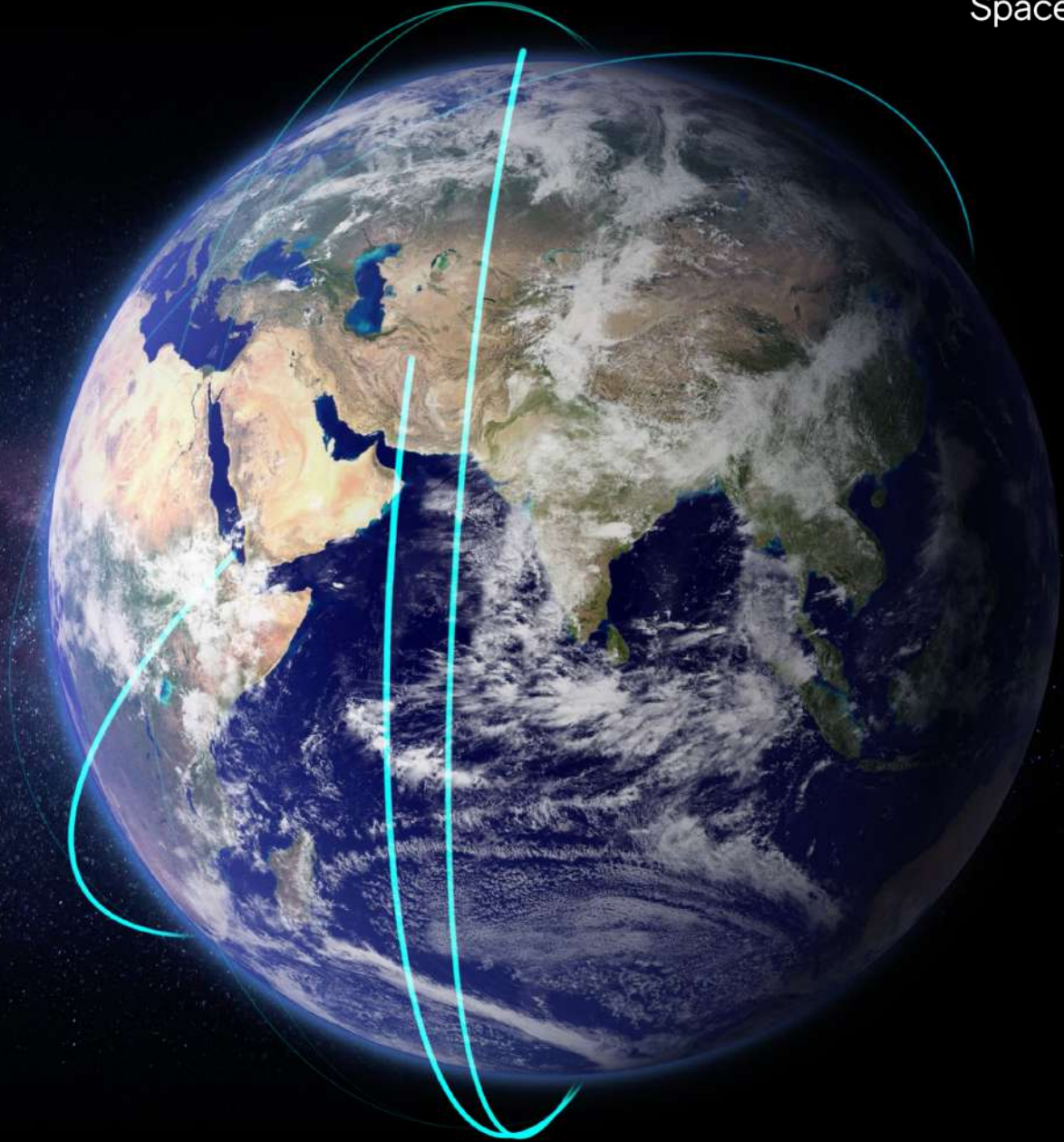
Missions



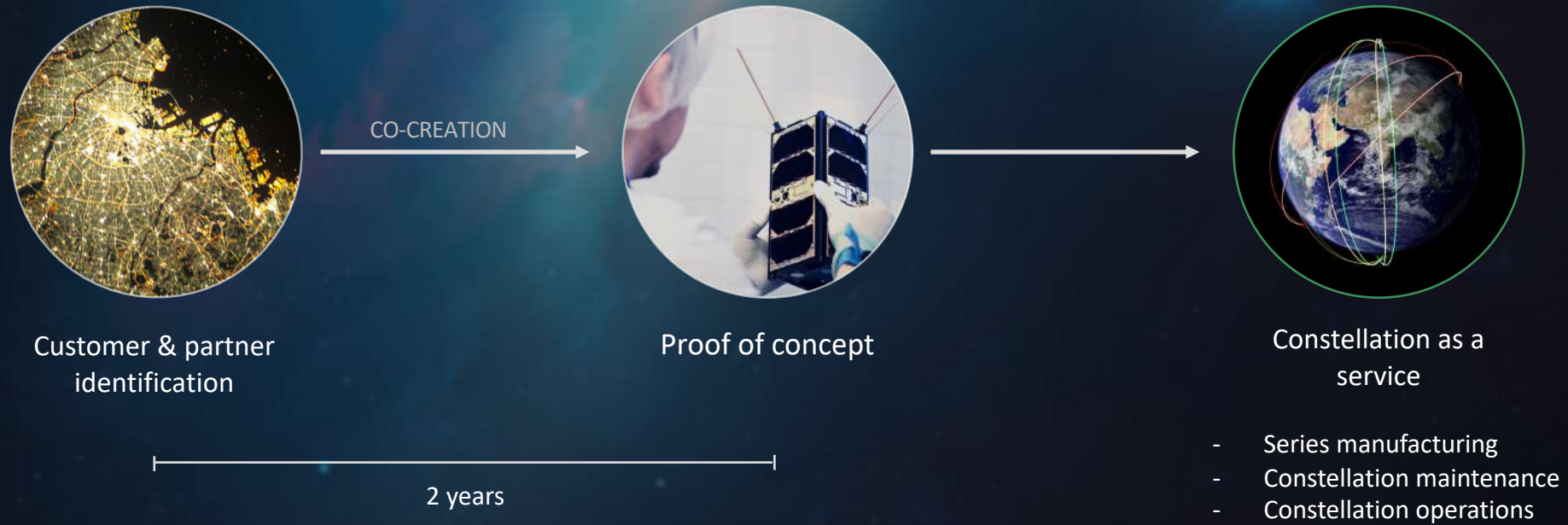
Nanosatellites



Space-based
services



Business model



Reaktor Hello World

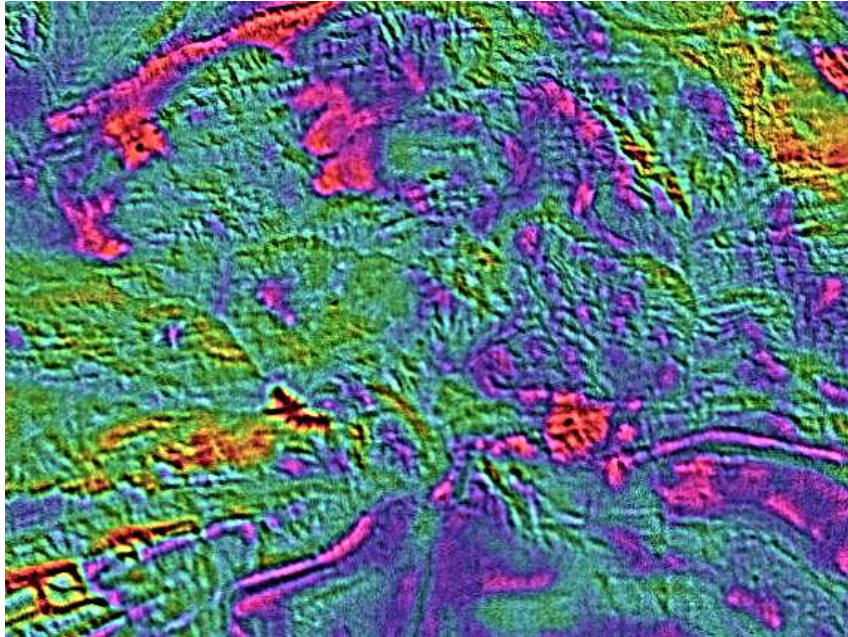
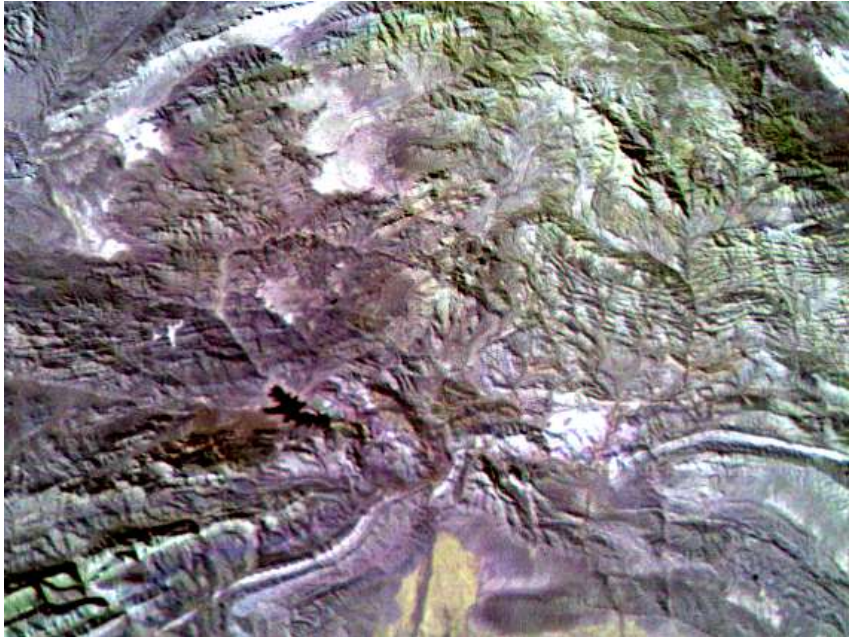
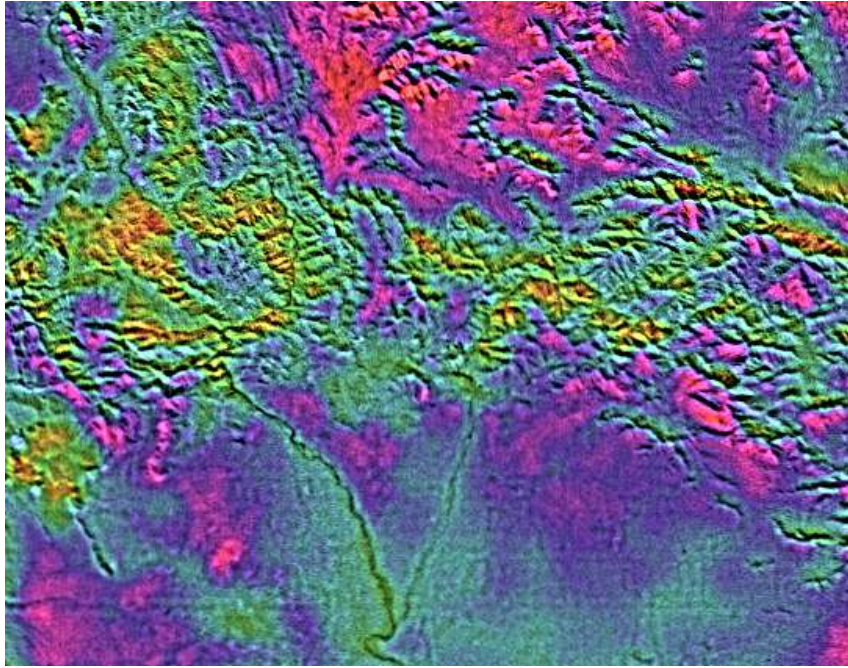
Hyperspectral











Water



Soil (high moisture)



Vegetation



Vegetation



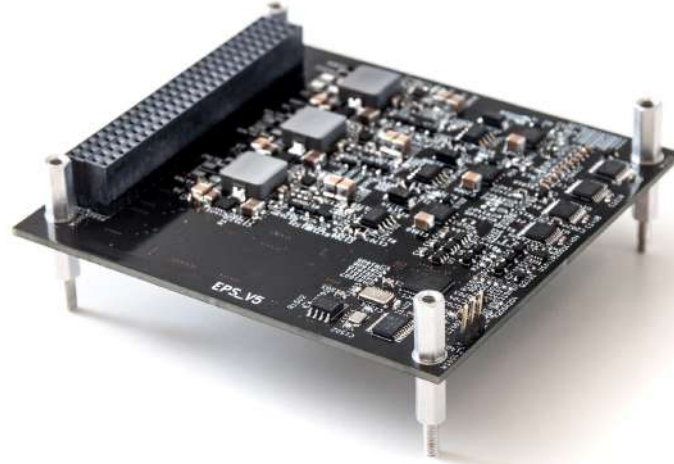
Soil



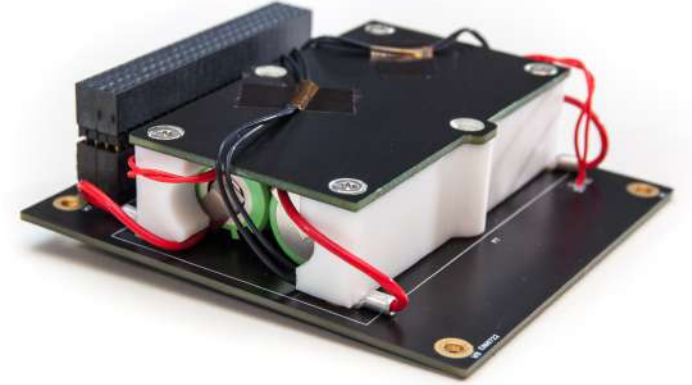
Soil mixed with vegetation



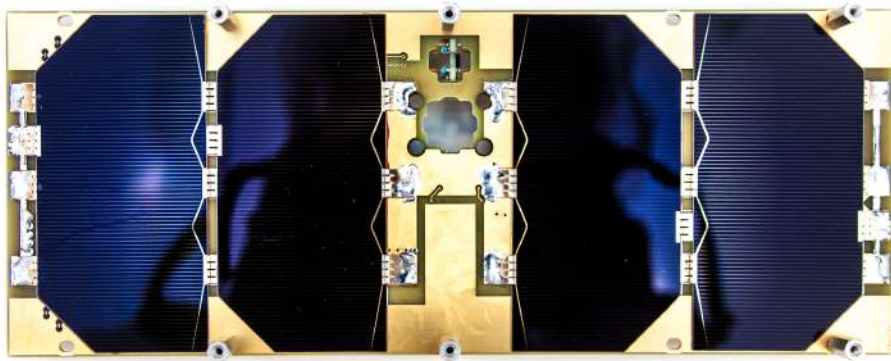
TM / TC radio
TRL 9



Power supply
TRL 9



Battery pack
TRL 9



Solar panel
TRL 9



Onboard computer
TRL 9

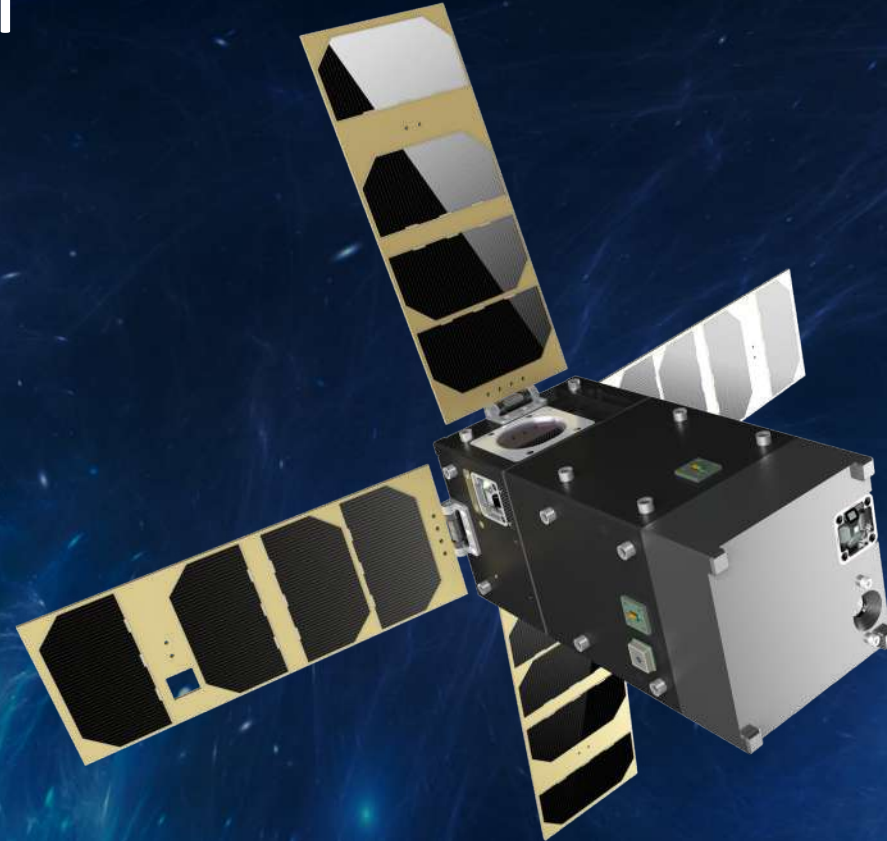
W-Cube (ESA)

Telecommunications



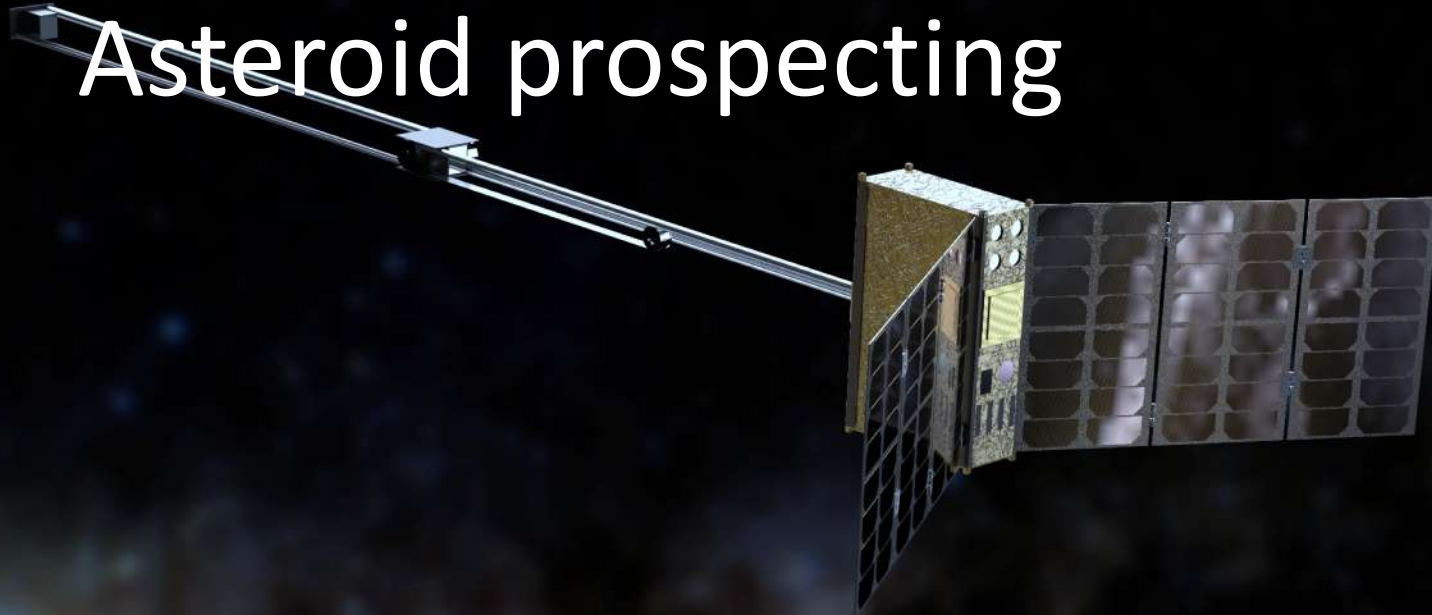
XFM (ESA)

Space Weather



ASPECT / APEX (ESA)

Asteroid prospecting

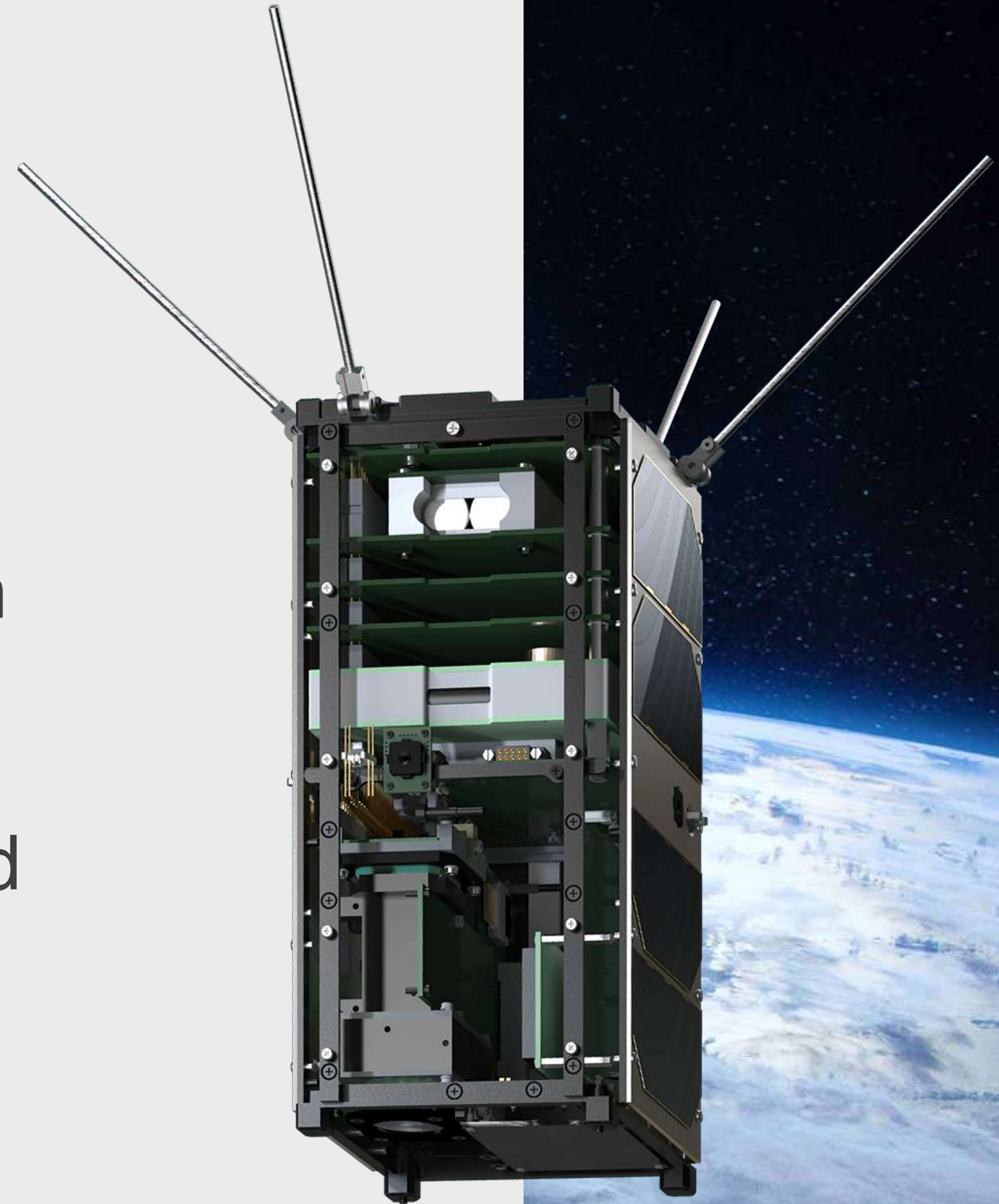




The RHW mission platform

A reliable and cost effective platform to enable global business cases.

Spacecraft bus, ground systems and fully automated mission control.
Constellations as a Service,
integrated to your business logic.



Elements of A.I.

The Most popular university course in Finland



Thank you!

A small satellite with a black and white body and blue solar panels is shown in space. It has four long, thin antennas extending from its corners. The satellite is positioned in the center of the frame, with the Earth's horizon and atmosphere visible below it. The background is a deep blue space filled with stars.

Juha-Matti Liukkonen

juha-matti.liukkonen@reaktor.com

+358 40 528 0142

Tuomas Tikka

tuomas.tikka@reaktorspace.com

+358 50 436 9119