



# HANS OLOFSSON

SENIOR ADVISOR GLOBAL INDUSTRIAL DEVELOPMENT

**SCANIA**



# Södertälje Science Park for Smart and Sustainable Industry of Tomorrow

**SCANIA**



# SCANIA IN BRIEF



An aerial photograph of a dense forest of tall, thin evergreen trees. The ground is covered in snow, and a dirt road with visible tire tracks winds through the center of the forest. The lighting suggests a bright day, with shadows cast by the trees.

# Driving the shift – towards a sustainable transport system

Scania's aim is to drive the shift towards a sustainable transport system, creating a world of mobility that is better for business, society and the environment.





# Our solutions



Choosing from customised heavy trucks, buses, engines and services, our customers can build a variety of cost-efficient, low-carbon solutions.

Trucks



Buses and coaches



Engines



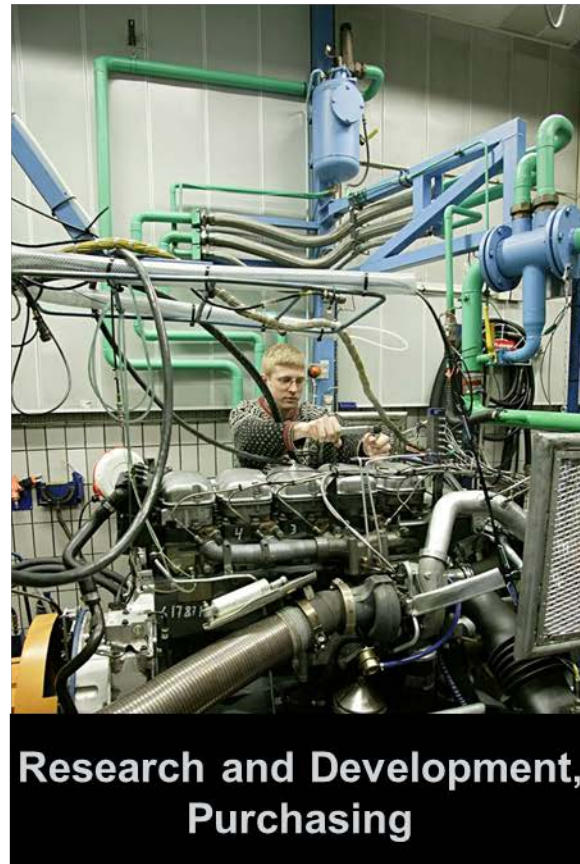
Services





# WHY ARE WE CONCENTRATED TO SÖDERTÄLJE

# All in one place







More than 16 000 employees  
in Södertälje

Production of Strategic components  
Research & Development  
Sales & Marketing  
Purchasing





# Production in Sweden - prerequisites

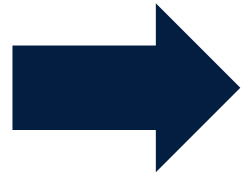
- Access to skilled employees and world-class competence in relevant areas
- Rules and Regulations that gives flexibility - Quick adaptation to changing needs
- Production systems that provide continuous improvement - Need of continuous productivity increases





# Production in Sweden - prerequisites

- Access to skilled employees and world-class competence in relevant areas



**External cooperation**







# **CLOSE COOPERATION**

## **BETWEEN BUSINESS, ACADEMIA AND SOCIETY**



# Leif Östling, 2016-06-30

*"Ett nära samarbete mellan näringsliv, akademi och samhälle är grunden för framgångsrika satsningar inom forskning, utveckling och entreprenörskap.*

*Södertälje Science Park ska bidra till att Sverige bibehåller sin starka ställning som ledande industrination."*

*" A close cooperation between business, academia and society is the basis for successful investments in research, development and entrepreneurship*

*Södertälje Science Park will contribute to Sweden's maintaining its strong position as a leading industrial nation*







# External Co-operation



Powertrain Manufacturing for Heavy Vehicles  
Application Lab  
- a collaboration between KTH, Fraunhofer and RISE





# SSCP – SÖDERTÄLJE SCIENCE PARK





# External Co-operation




**SÖDERTÄLJE  
SCIENCE  
PARK**



in Manufacturing for Heavy Vehicles  
on Lab  
between KTH, Fraunhofer and RISE



CHALMERS



Södertälje is an area with a strong connection to the manufacturing and production industry.

100 000

INHABITANTS

>50 000

WORKPLACES

11%

OF THE PATENT APPLIED FOR IN SWEDEN

162

BILLIONS IN TURNOVER

2,3

MILLION PEOPLE REACHES SÖDERTÄLJE < 1 timme

7 500

COMPANIES

20 000

NEW HOUSINGS WITHIN 20 YEARS

>500

STARTUPS

700

anlöpande fartyg

707

ISLANDS

86

LAKES

80

DIFFRENT LANGUAGES

24

NATURES RESERVE

694 km<sup>2</sup>

AREA

10%

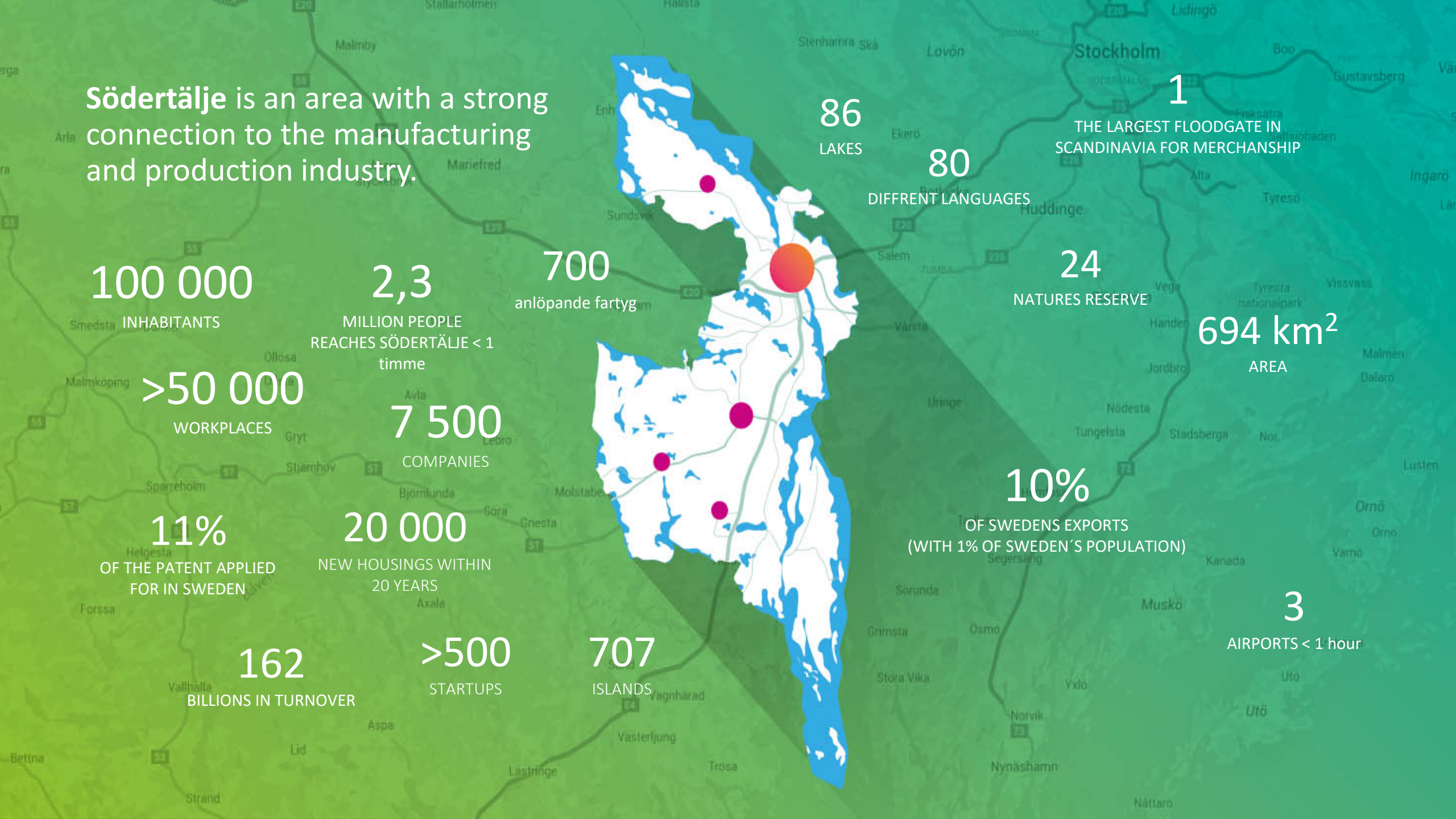
OF SWEDENS EXPORTS (WITH 1% OF SWEDEN'S POPULATION)

3

AIRPORTS < 1 hour

1

THE LARGEST FLOODGATE IN SCANDINAVIA FOR MERCHANSHIP







# Södertälje Science Park - SSCP

- An active Board of Directors from business, public sector and academia



Södertälje Science Park AB est 2016

Founders/owners

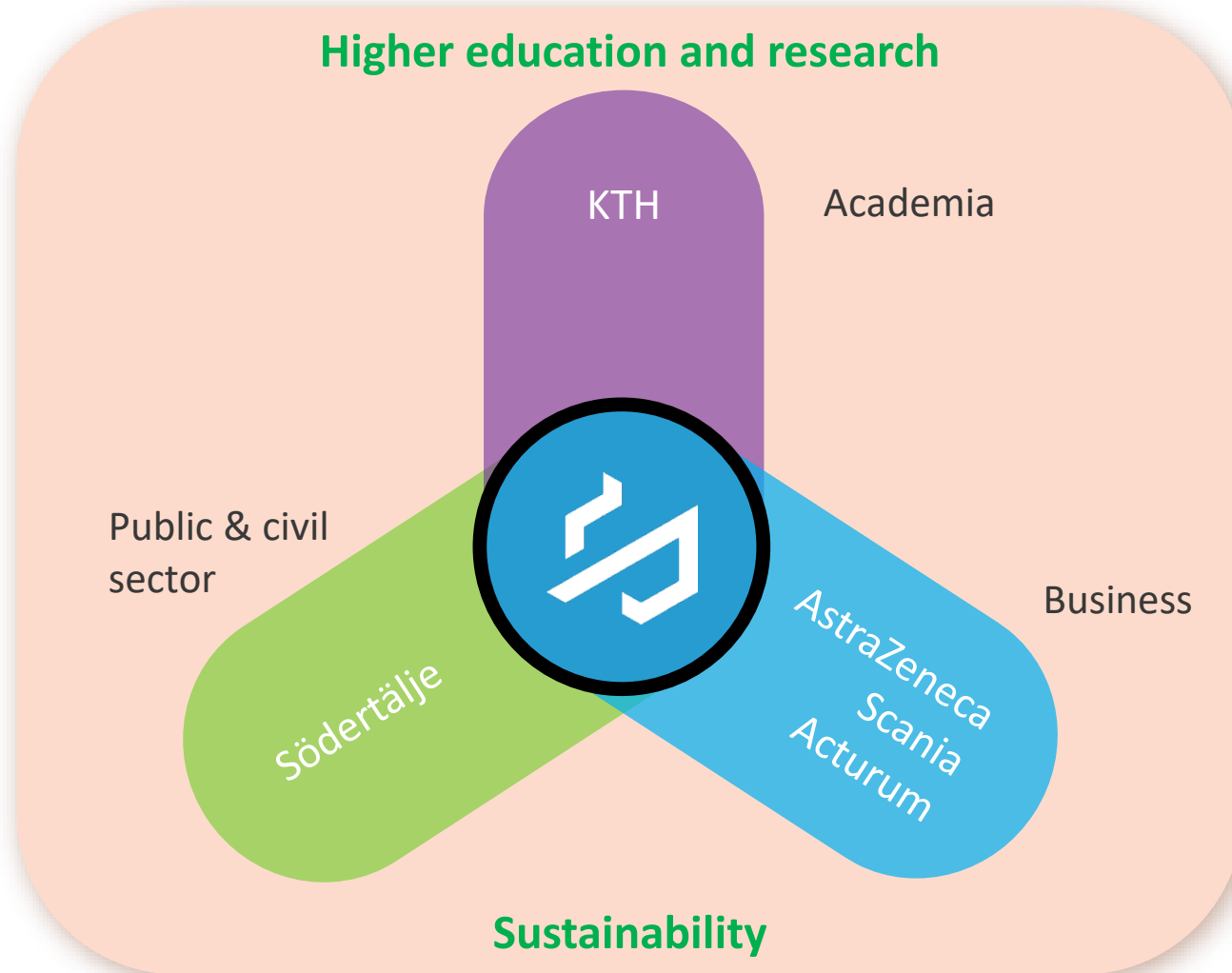
- Södertälje Municipality
- AstraZeneca
- Scania
- KTH

Chairman Leif Östling (former CEO of Scania)





# Södertälje Science Park - SSCP



The Science Park,  
a long-term,  
neutral and value  
creating enabler.



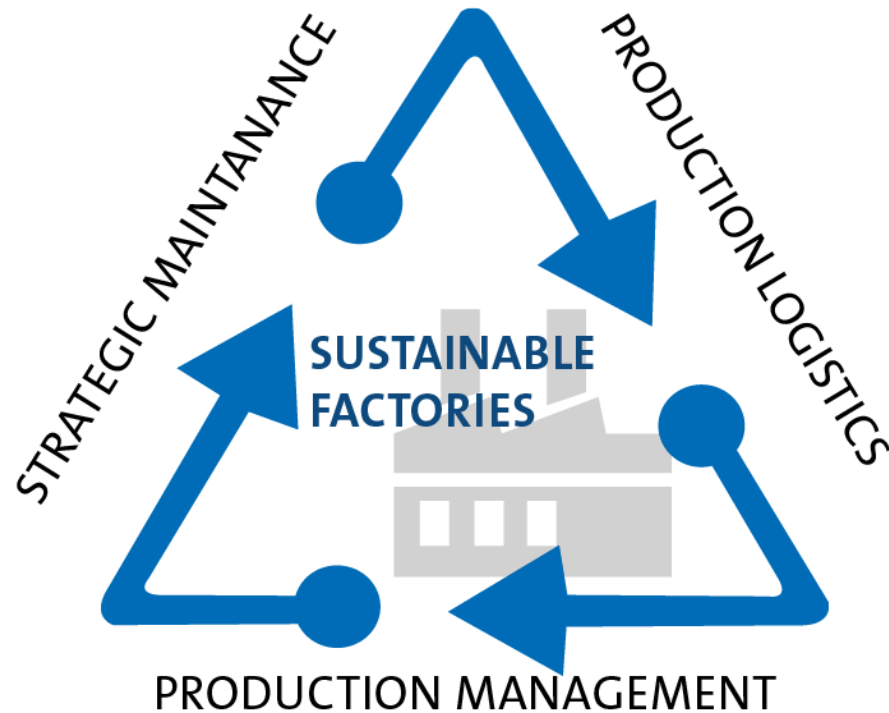


# Focus for SSCP - Sustainable production

- Södertälje Science Park will be a national hub developing sustainable production flows
- Target group is all companies (large and small), organisations and authorities that wants to develop their abilities within sustainable production
- The combined competencies and networks at KTH, AstraZeneca, and Scania is the basis research and education in sustainable production



# KTH Södertälje



KTH has in cooperation with Scania and AstraZeneca made a common investment in education and research within the areas of:

- Production Management
- Production Logistics
- Strategic Maintenance

With the aim to create world-class competence in the area of sustainable production flows



# Examples of cooperation activities



Scania Global Industrial Development, technology day hosted by SSCP



Lean training for small and medium sized companies based on learnings from Scania



# Sustainable Production of services and goods

## Project examples

- Industrialisation – from prototype to production (time to cash)
- DigiLog
- Production Angels
- Frontrunners for Sustainable Innovation
- Lean (KTH LeanCentrum)
- Open Prototyping Södertälje (OPS)
- Kickstart Digitalisation
- SSCP Innovation Prize
- SSCP Inspiration (Inspirational seminars)
- Södertälje Science Week and Science Week School





# CONCLUSIONS





# Conclusions



**will.....**

- **Give us access to world-class competence**
- **Strengthen the prerequisites for production in Sweden**
- **Support the development of the Smart and Sustainable Industry of Tomorrow**





## Hans Olofsson

**Senior Advisor | Global Industrial Development, TE | Scania CV AB**

Phone: +46 8 553 83525 Mobile: +46 70 588 3525

Address: 151 87 Södertälje, Sweden

[hans.olofsson@scania.com](mailto:hans.olofsson@scania.com)

<https://www.linkedin.com/in/hasseolofsson>



# SCANIA